

List of pages in this Trip Kit

Trip Kit Index

Airport Information For RKJJ

Terminal Charts For RKJJ

Revision Letter For Cycle 16-2023

Change Notices

Notebook

General Information

Location: GWANGJU KOR
ICAO/IATA: RKJJ / KWJ
Lat/Long: N35° 07.58', E126° 48.53'
Elevation: 48 ft

Airport Use: Joint-Use
Daylight Savings: Not Observed
UTC Conversion: -9:00 = UTC
Magnetic Variation: 8.0° W

Customs: No
Airport Type: IFR
Landing Fee: Yes
Control Tower: Yes
Jet Start Unit: No
LLWS Alert: No
Beacon: Yes

Sunrise: 2119 Z
Sunset: 0934 Z

Runway Information

Runway: 04L
Length x Width: 9301 ft x 148 ft
Surface Type: concrete
TDZ-Elev: 46 ft
Lighting: Edge, ALS

Runway: 04R
Length x Width: 9301 ft x 148 ft
Surface Type: concrete
TDZ-Elev: 46 ft
Lighting: Edge, ALS

Runway: 22L
Length x Width: 9301 ft x 148 ft
Surface Type: concrete
TDZ-Elev: 48 ft
Lighting: Edge, ALS

Runway: 22R
Length x Width: 9301 ft x 148 ft
Surface Type: concrete
TDZ-Elev: 48 ft
Lighting: Edge, ALS

Communication Information

ATIS: 23.470 Military

ATIS: 128.875

Gwangju Tower: 118.050

Gwangju Tower: 25.460 Military

Gwangju Tower: 23.660 Military

Gwangju Ground: 121.800

Gwangju Ground: 27.580 Military

Gwangju Approach: 26.550 Military

Gwangju Approach: 31.920 Military

Gwangju Approach: 130.000

Gwangju Approach: 120.475

Gwangju Approach: 22.890 Military

Gwangju Arrival: 33.140 Military

Gwangju Arrival: 28.135 Military

Gwangju Arrival: 26.800 Military

Gwangju Arrival: 132.700

Gwangju Arrival: 132.250

Gwangju Arrival: 36.650 Military

Gwangju Departure: 124.700

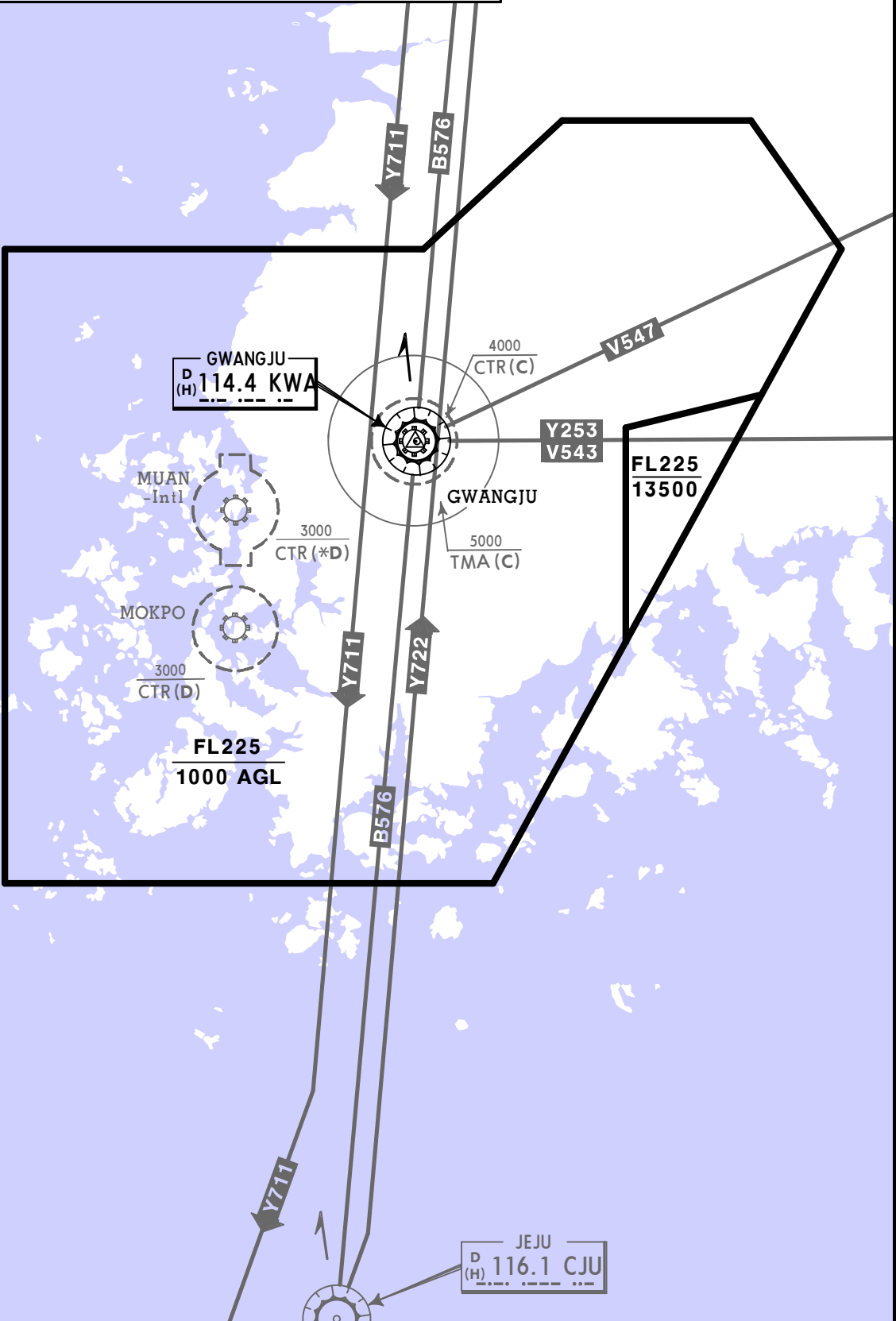
Gwangju Departure: 124.000

Gwangju Departure: 34.720 Military

GWANGJU TERMINAL CONTROL AREA

Gwangju App(R) 130.0 Dep(R) 124.0

SPEED RESTRICTIONS WITHIN KOREAN AIRSPACE
 All Arrivals into RKSS and RKSI shall operate in accordance with the flight procedures for that airport.
 Maximim IAS unless otherwise authorized by ATC:
 BELOW 10000'250 KTS
 Class C and Class D Airspace:
 At or below 2500' AGL within 4NM of an Airport..200 KTS



RKJJ/KWJ
GWANGJU

JEPPESEN
19 AUG 22 (10-1R)

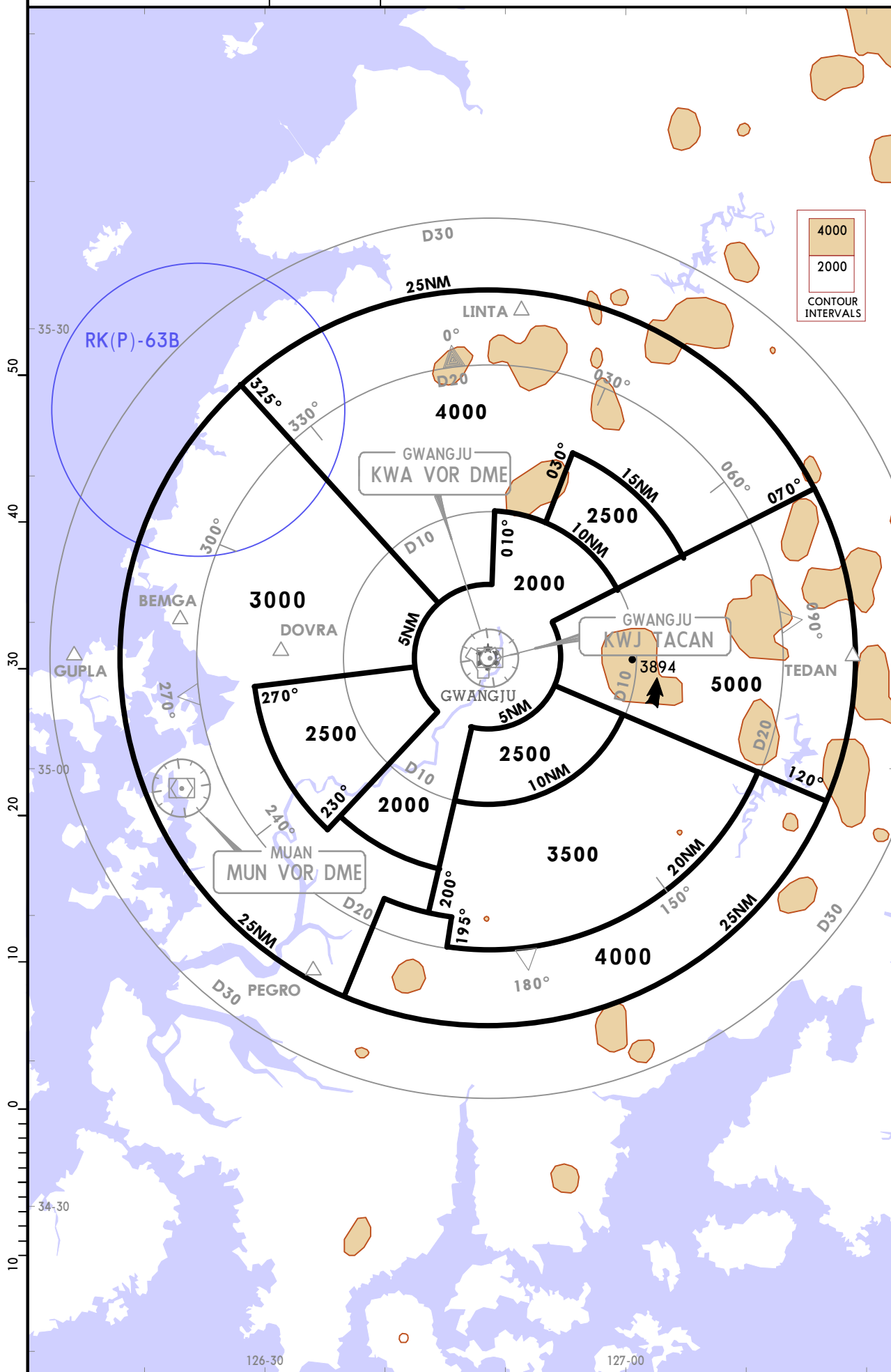
GWANGJU, KOREA

RADAR MINIMUM ALTITUDES

GWANGJU Approach (R)
130.0 120.475

Apt Elev
48

Alt Set: hPa Trans level: FL140 Trans alt: 14000



RKJJ/KWJ
GWANGJU

 JEPPESEN

14 APR 23

10-2

Eff 19 Apr 1600Z

GWANGJU, KOREA

STAR

RADIO COMMUNICATION FAILURE PROCEDURE

IFR

1. GENERAL

- a. No person may take off unless two-way radio communications can be maintained with the Air Traffic Control.
- b. On recognition of communication failure during flight, squawk 7600 and if necessary to ensure safe altitude, climb to Minimum Safe Altitude or above to MAINTAIN obstacle clearance.

Then comply with the following procedure:

2. VFR condition

If the failure to radio communication occurs in VFR conditions, or if VFR conditions are encountered after the failure, a pilot shall continue the flight under VFR and land as soon as practicable based on the runway in use.

3. IFR condition

If the failure occurs in IFR conditions, or if the requirements specified in paragraph 2 of this section cannot be met, a pilot shall continue the flight according to the following procedures:

ARRIVAL

Runways 04L/R in use

The aircraft shall proceed to KOTTY IAF and execute ILS/DME RWY 04R or VOR/DME RWY 04L/R approach.

Runways 22L/R in use

The aircraft shall proceed to JADOO IAF and execute VOR/DME RWY 22L/R approach.

RKJJ/KWJ
GWANGJU

JEPPESSEN

GWANGJU, KOREA

14 APR 23

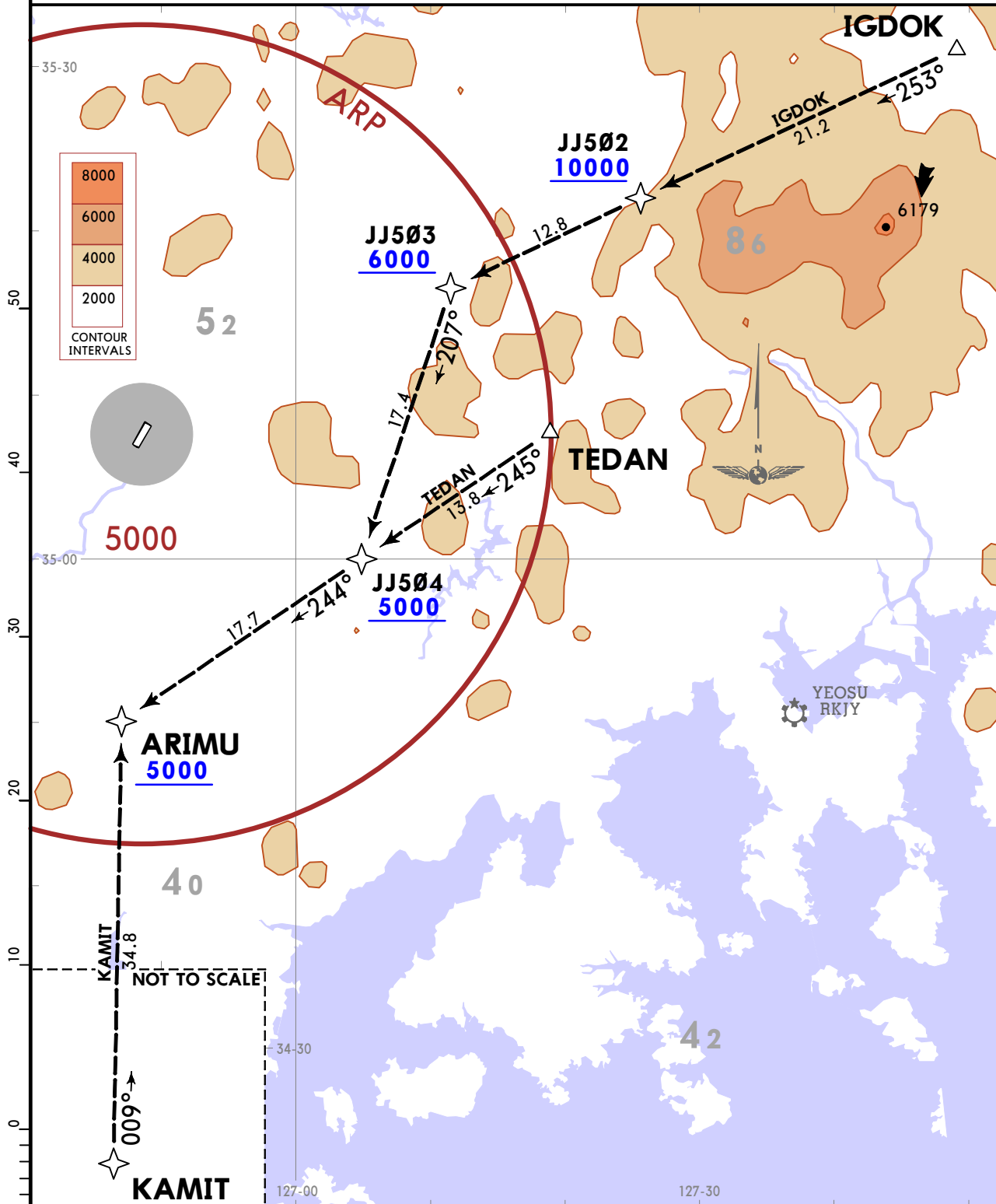
10-2A

Eff 19 Apr 1600Z

RNAV STAR

*D-ATIS 128.875	Apt Elev 48	Alt Set: hPa Trans level: FL140
		RNAV 1 operation DME/DME/IRU not authorized.
		RADAR required.

ARIMU 1 RNAV ARRIVAL [ARIMU1]
(RWYS 04L/R)



TRANSITIONS	
IGDOK	From IGDOK on track 253° to JJ502 at or above 10000, then track 253° to JJ503 at or above 6000, then track 207° to JJ504 at or above 5000, then track 244° to ARIMU at or above 5000.
KAMIT	From KAMIT on track 009° to ARIMU at or above 5000.
TEDAN	From TEDAN on track 245° to JJ504 at or above 5000, then track 244° to ARIMU at or above 5000.

LANDING
At ARIMU, EXPECT RNP approach following transition routes.

RKJJ/KWJ
GWANGJU

JEPPESSEN

GWANGJU, KOREA

14 APR 23

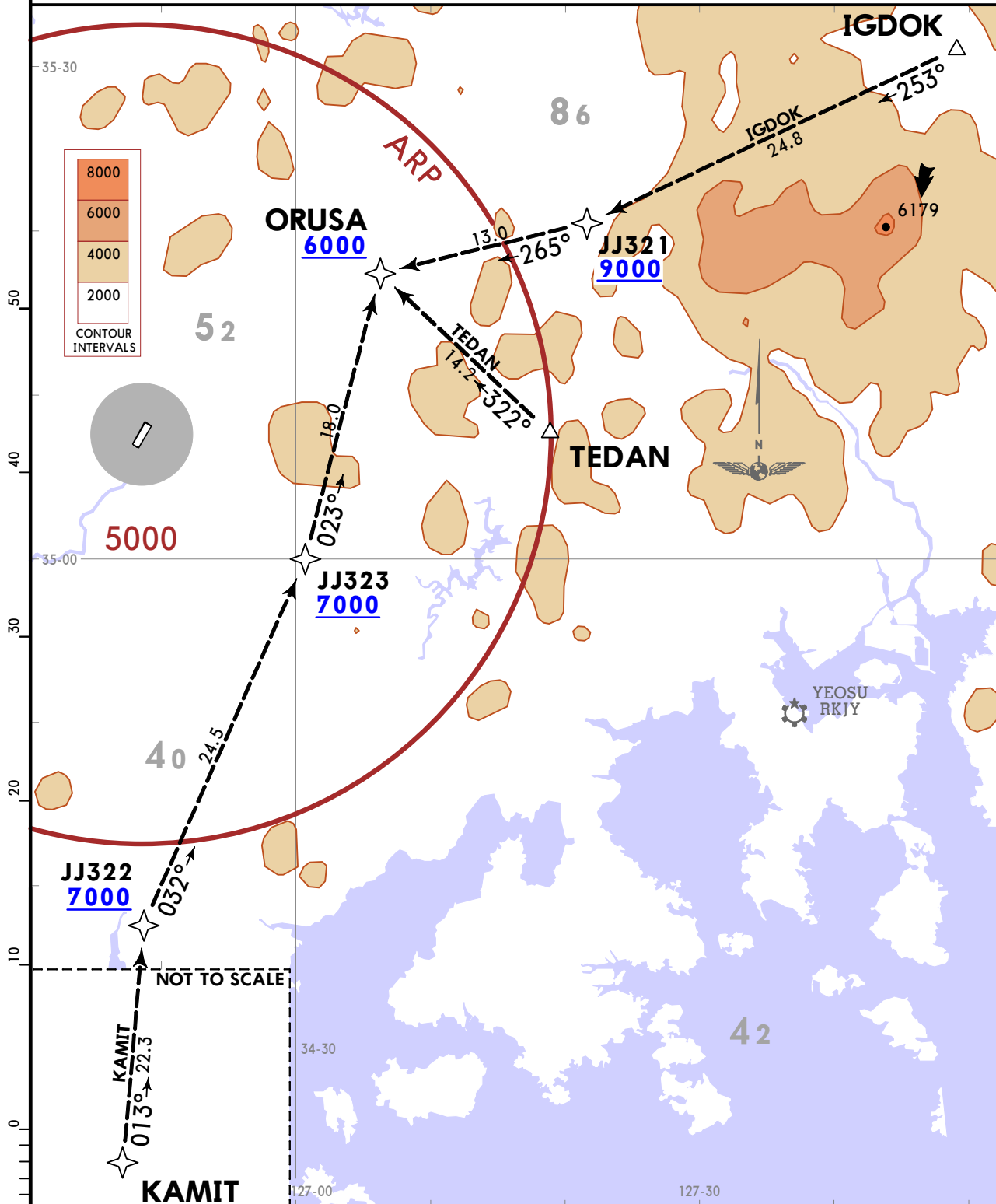
10-2B

Eff 19 Apr 1600Z

RNAV STAR

*D-ATIS 128.875	Apt Elev 48	Alt Set: hPa Trans level: FL140
		RNAV 1 operation DME/DME/IRU not authorized.
		RADAR required.

ORUSA 1 RNAV ARRIVAL [ORUSA1]
(RWYS 22L/R)



TRANSITIONS	
IGDOK	From IGDOK on track 253° to JJ321 at or above 9000, then track 265° to ORUSA at or above 6000.
KAMIT	From KAMIT on track 013° to JJ322 at or above 7000, then track 032° to JJ323 at or above 7000, then track 023° to ORUSA at or above 6000.
TEDAN	From TEDAN on track 322° to ORUSA at or above 6000.

LANDING
At ORUSA, EXPECT RNP approach following transition routes.

RKJJ/KWJ
GWANGJU

JEPPESEN

GWANGJU, KOREA

14 APR 23

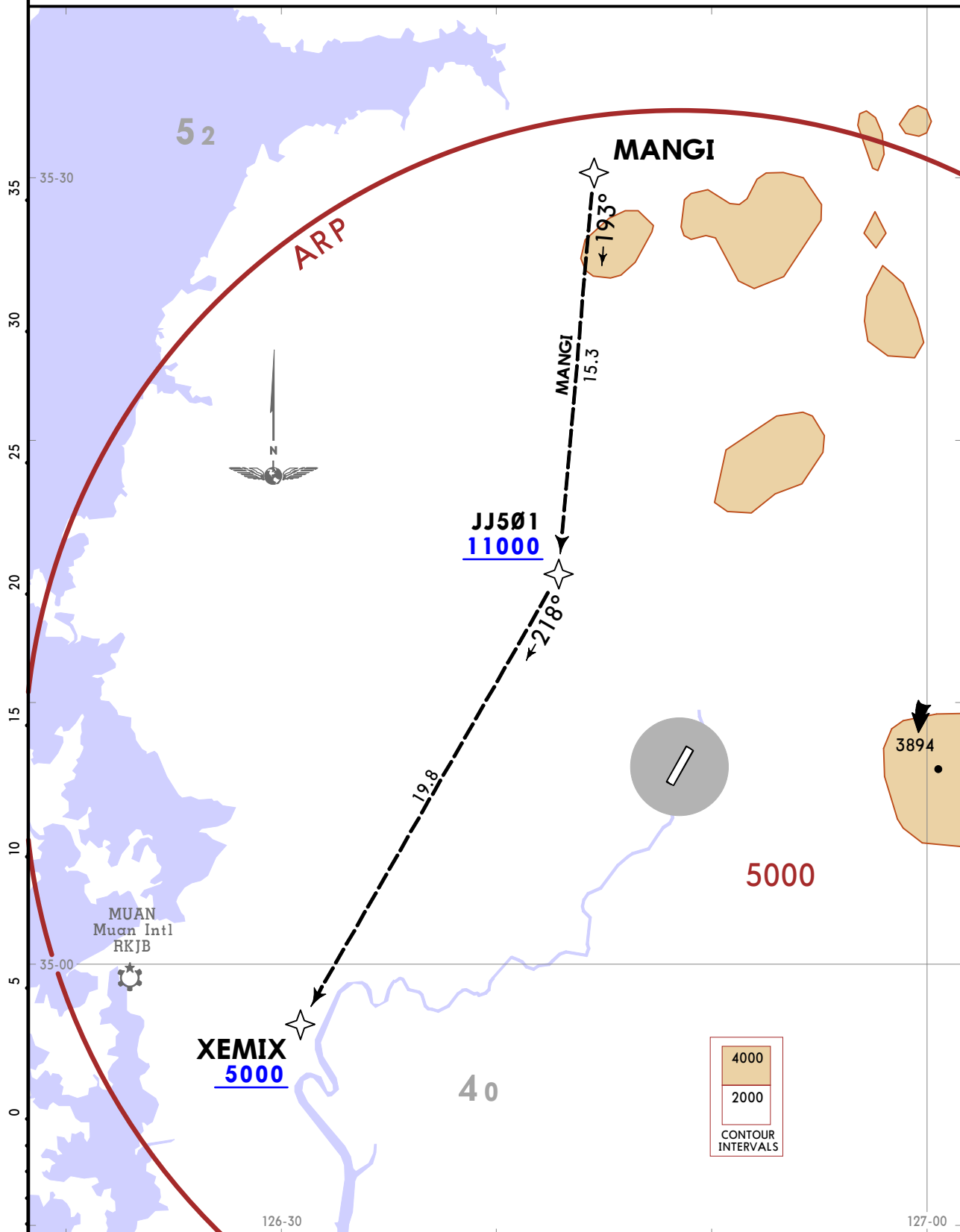
10-2C

Eff 19 Apr 1600Z

RNAV STAR

*D-ATIS 128.875	Apt Elev 48	Alt Set: hPa Trans level: FL140
		RNAV 1 operation DME/DME/IRU not authorized.
RADAR required.		

**XEMIX 1 RNAV ARRIVAL [XEMIX1]
(RWYS 04L/R)**



TRANSITION	
MANGI	From MANGI on track 193° to JJ501 at or above 11000, then track 218° to XEMIX at or above 5000.

LANDING

At XEMIX, EXPECT RNP approach following transition routes.

RKJJ/KWJ
GWANGJU


15 APR 22 **10-3** Eff 20 Apr 1600Z
GWANGJU, KOREA
SID

RADIO COMMUNICATION FAILURE PROCEDURE

IFR

1. GENERAL

- a. No person may take off unless two-way radio communications can be maintained with the Air Traffic Control.
- b. On recognition of communication failure during flight, squawk 7600 and if necessary to ensure safe altitude, climb to Minimum Safe Altitude or above to MAINTAIN obstacle clearance.

Then comply with the following procedure:

2. VFR condition

If the failure to radio communication occurs in VFR conditions, or if VFR conditions are encountered after the failure, a pilot shall continue the flight under VFR and land as soon as practicable based on the runway in use.

3. IFR condition

If the failure occurs in IFR conditions, or if the requirements specified in paragraph 2 of this section cannot be met, a pilot shall continue the flight according to the following procedures:

DEPARTURE

a. Under Pilot Navigation

Runways 04L/R in use

1) GWANGJU 3:

Climb heading 038° to 2300, then

Climb to assigned or specified altitude via (the following transition routes)

- a) LINTA TRANSITION: LEFT turn heading 330° to intercept KWA R013 and KWA R013 to LINTA.
- b) IPDAS TRANSITION: RIGHT turn direct to KWA R097/D10.0 at or above 5000, then RIGHT turn heading 225° to intercept KWA R193 to IPDAS.

Runways 22L/R in use

2) GWANGJU 4:

Climb heading 218° to 1900, then

Climb to assigned or specified altitude via (the following transition routes)

- a) LINTA TRANSITION: LEFT turn direct to KWA R097/D10.0 at or above 5000, then LEFT turn heading 330° to intercept KWA R013 and KWA R013 to LINTA.
- b) IPDAS TRANSITION: LEFT turn heading 160° to intercept KWA R193 and KWA R193 to IPDAS.

b. Under RADAR Vectoring

- 1) Proceed by the direct route from the point of radio failure to the fix, route, or airway specified in the vector clearance;
- 2) In the absence of an assigned route, proceed by the route that ATC will advise through the forthcoming clearance; or
- 3) In the absence of an assigned route or a route that ATC will advise through the forthcoming clearance, proceed by the route filed in the flight plan; and
- 4) MAINTAIN Minimum Enroute Altitude (MEA) or the altitude/flight level cleared in the last ATC clearance received, whichever is higher, for 20 minutes; then
- 5) Continue the flight with altitude/flight level filed in the flight plan.

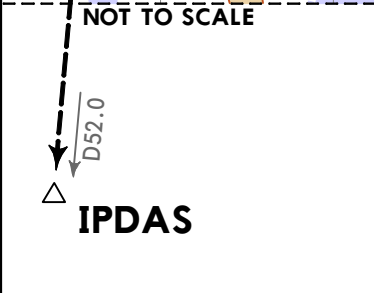
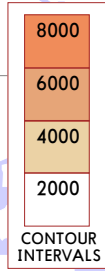
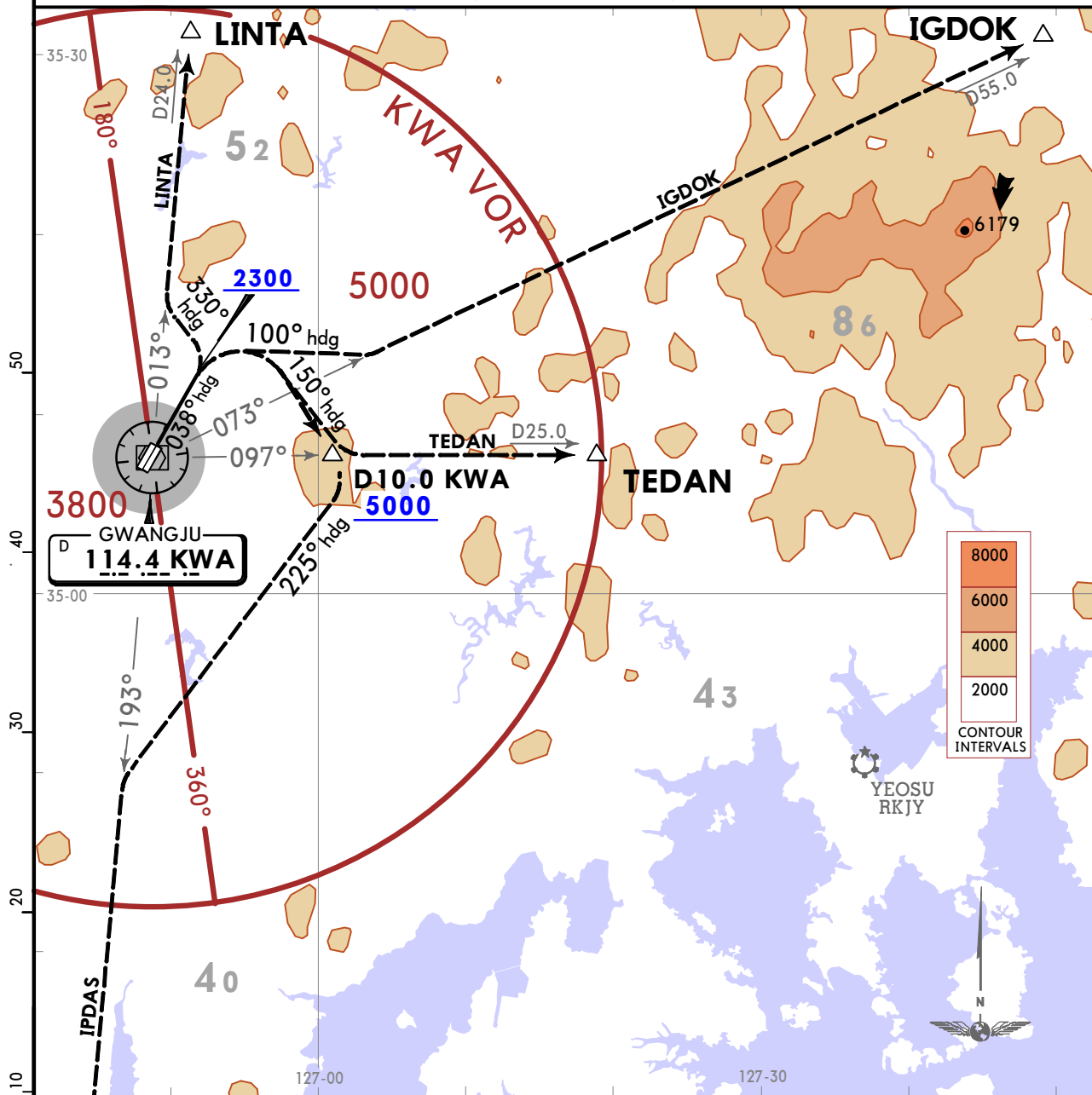
RKJJ/KWJ
GWANGJU

JEPPESEN
15 APR 22 **(10-3A)** Eff 20 Apr 1600Z

GWANGJU, KOREA
SID

GWANGJU Departure (R) 124.0 124.7	Apt Elev 48	Trans alt: 14000 VOR/DME required.
--------------------------------------	----------------	---------------------------------------

GWANGJU 3 DEPARTURE
(RWYS 04L/R)



Take-off minimum:
Minimum climb of 320 per NM to 5400.

Gnd speed-KT	75	100	150	200	250	300
320 per NM	400	533	800	1067	1333	1600

OBSTACLES
RWY 04L: Trees 2073 from DER, 25 left of centerline, 52 AGL/100 MSL.
RWY 04L: Trees 2330 from DER, 494 right of centerline, 6 AGL/54 MSL.
RWY 04R: Trees 2073 from DER, 660 left of centerline, 54 AGL/100 MSL.
RWY 04R: Trees 2329 from DER, 139 left of centerline, 8 AGL/54 MSL.

INITIAL CLIMB
Climb heading 038° to 2300. Climb to assigned or specified altitude via (the following transition routes).

TRANSITIONS	
IGDOK	RIGHT turn heading 100° to intercept KWA R073 and KWA R073 to IGDOK.
IPDAS	RIGHT turn direct to KWA R097/D10.0 at or above 5000, then RIGHT turn heading 225° to intercept KWA R193 and KWA R193 to IPDAS.
LINTA	LEFT turn heading 330° to intercept KWA R013 and KWA R013 to LINTA.
TEDAN	RIGHT turn heading 150° to intercept KWA R097 and KWA R097 to TEDAN.

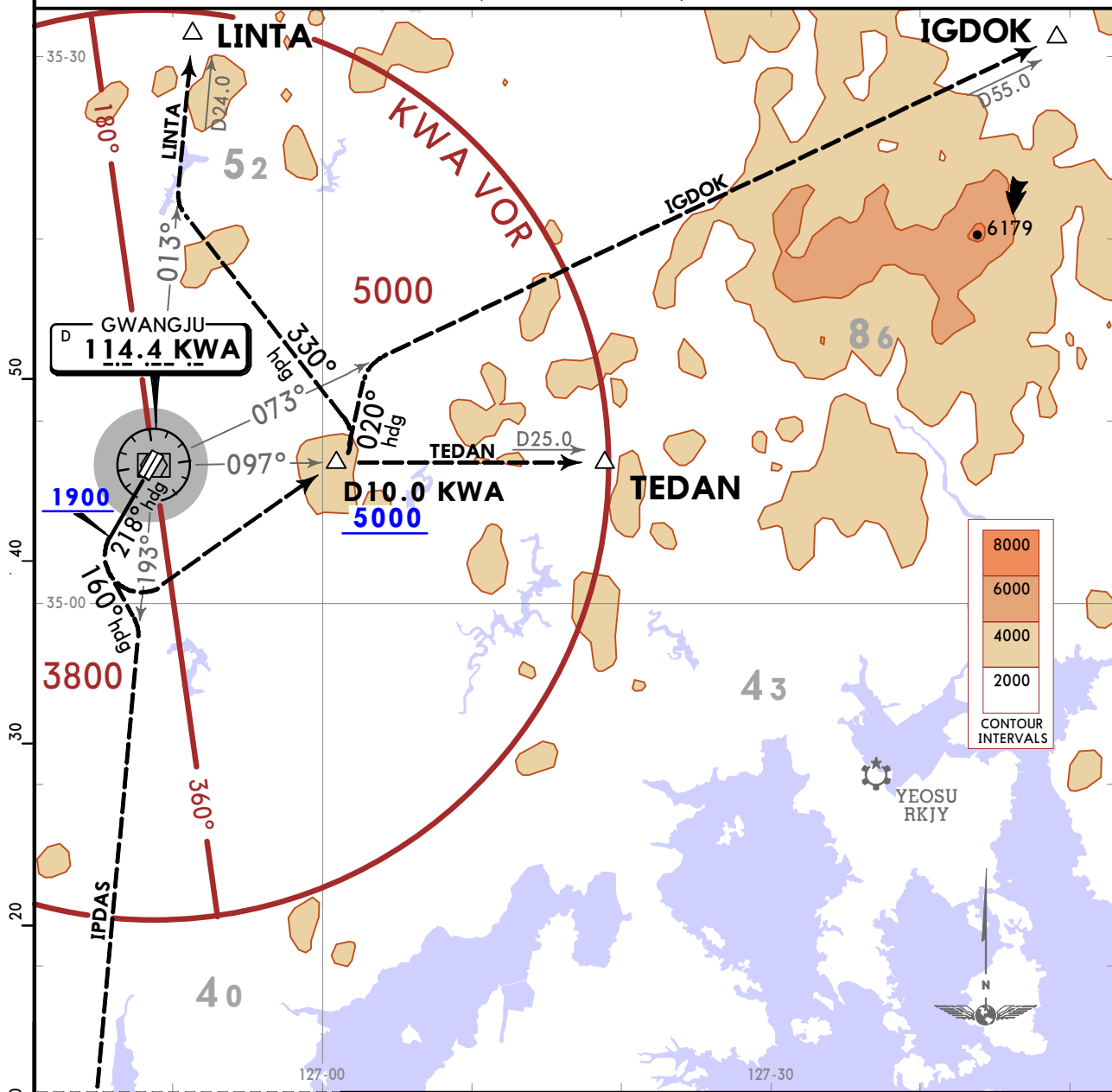
RKJJ/KWJ
GWANGJU

JEPPESSEN
22 JUL 22 (10-3B)

GWANGJU, KOREA
SID

GWANGJU Departure (R) 124.0 124.7	Apt Elev 48	Trans alt: 14000 VOR/DME required.
--------------------------------------	----------------	---------------------------------------

**GWANGJU 4 DEPARTURE
(RWYS 22L/R)**



NOT TO SCALE
D52.0
IPDAS

Take-off minimum:
Minimum climb of 280 per NM to 5300.

Gnd speed-KT	75	100	150	200	250	300
280 per NM	350	467	700	933	1167	1400

OBSTACLES
RWY 22L: Pole 3356 from DER, 728 left of centerline, 108 AGL/151 MSL.
RWY 22R: Pole 3356 from DER, 1363 left of centerline, 108 AGL/151 MSL.
RWY 22R: Trees 1473 from DER, 551 right of centerline, 48 AGL/92 MSL.

INITIAL CLIMB	
Climb heading 218° to 1900. Climb to assigned or specified altitude via (the following transition routes).	
TRANSITIONS	
IGDOK	LEFT turn direct to KWA R097/D10.0 at or above 5000, then LEFT turn heading 020° to intercept KWA R073 and KWA R073 to IGDOK.
IPDAS	LEFT turn heading 160° to intercept KWA R193 and KWA R193 to IPDAS.
LINTA	LEFT turn direct to KWA R097/D10.0 at or above 5000, then LEFT turn heading 330° to intercept KWA R013 and KWA R013 to LINTA.
TEDAN	LEFT turn direct to KWA R097/D10.0 at or above 5000, then RIGHT turn direct to TEDAN.

CHANGES: RWY 22R Pole obstacle AGL altitude changed from 107 to 108.

JEPESENGWANGJU, KOREA
 14 APR 23 (10-3D) Eff 19 Apr 1600Z RNAV SID

GWANGJU Departure (R)
124.0 124.7

Apt Elev
48

Trans alt: 14000

RNAV 1 operation DME/DME/IRU not authorized
 RADAR required.

LILVI 1 RNAV DEPARTURE
 [LILVI1]
 (RWY 04L/R)

SPEED RESTRICTION
 Do not exceed 210 KT at LILVI, JJ401 and JJSUN.

OBSTACLES
 RWY 04L: Trees 2073 from DER, 25 left of centerline, 52 AGL/100 MSL.
 RWY 04L: Trees 2330 from DER, 494 right of centerline, 6 AGL/54 MSL.
 RWY 04R: Trees 2073 from DER, 660 left of centerline, 54 AGL/100 MSL.
 RWY 04R: Trees 2329 from DER, 139 left of centerline, 8 AGL/54 MSL.

Minimum climb of 450 FT/NM to 5300.

Grd speed-KT	75	100	150	200	250	300
450 FT/NM	563	750	1125	1500	1875	2250

RWY	INITIAL CLIMB	TOP ALTITUDE
04L	Climb on course 039° to LILVI, then via transition routes and expect further clearance to field altitude after departure.	7000
04R	Climb on course 038° to LILVI, then via transition routes and expect further clearance to field altitude after departure.	7000

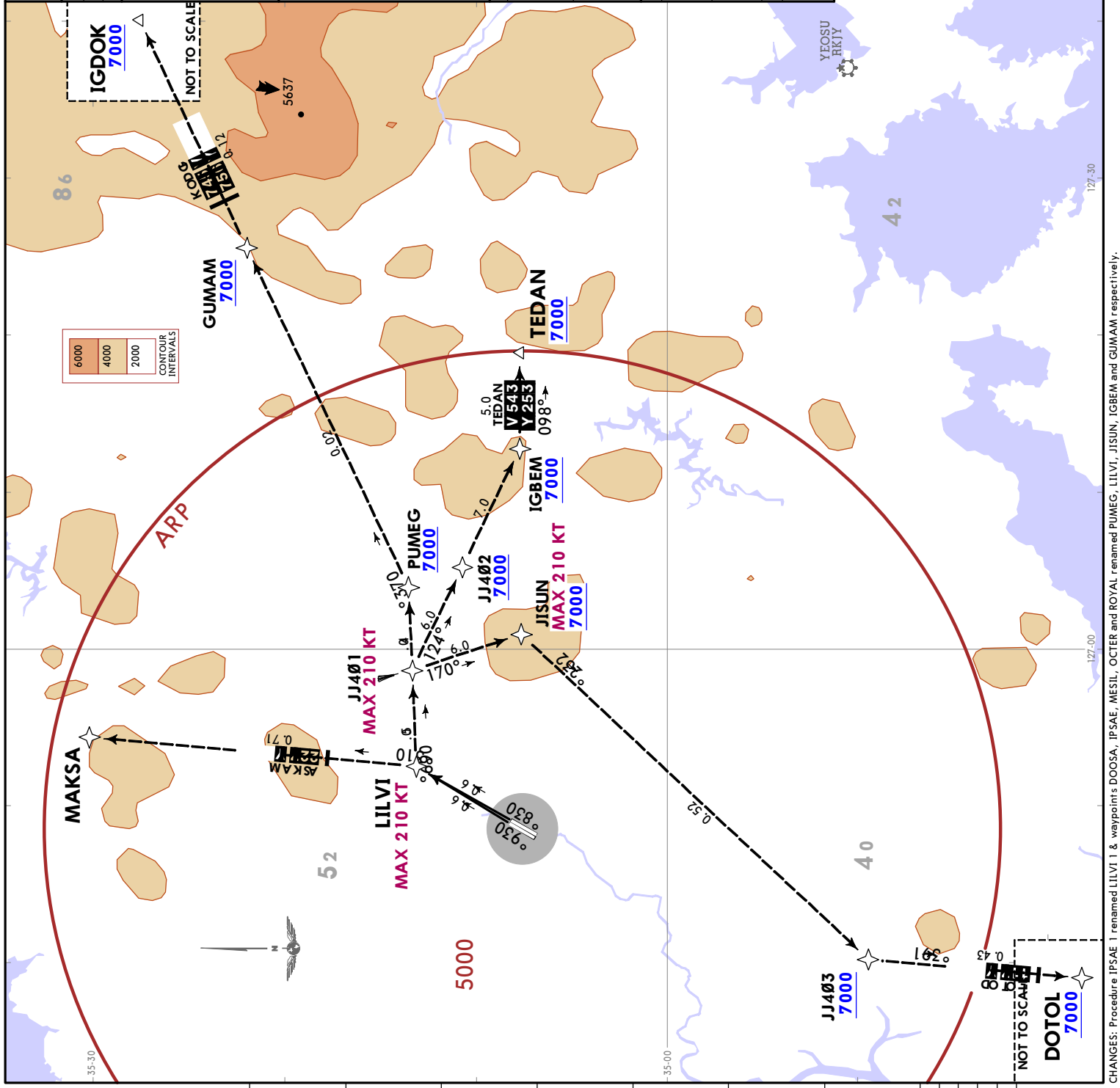
TRANSITIONS

DOTOL
 From LILVI track 096° to JJ401 and track 170° to JJSUN at or above 7000, then track 232° to JJ403 and track 193° to DOTOL.

IGDOK
 From LILVI track 096° to JJ401 and track 096° to PUMEG at or above 7000, then track 073° to GUMAM and track 073° to IGDOK.

MAKSA
 From LILVI track 013° to MAKSA.

TEDAN
 From LILVI track 096° to JJ401 and track 124° to JJ402 at or above 7000, then track 124° to IGBEM and track 098° to TEDAN.



RKJJ/KWJ
 GWANGJU

JEYPESEN
 14 APR 23 (10-3E) **Eff 19 Apr 1600Z**
GWANGJU, KOREA
RNAV SID

RKJJ/KWJ
GWANGJU

GWANGJU Departure (R)	124.0 124.7	Apt Elev	48
Trans alt: 14000			
RNAV 1 operation	DME/DME/IRU not authorized		
	RADAR required.		

MARYO 1 RNAV DEPARTURE
[MARYO1]
(RWY 22L/R)

SPEED RESTRICTION
 Do not exceed 210 KT at MARYO and JJ221.
 Do not exceed 250 KT at JISUN.

OBSTACLES

RWY 22L: Pole 3356 from DER, 728 left of centerline, 108 AGL/151 MSL.
 RWY 22R: Pole 3356 from DER, 1299 left of centerline, 107 AGL/151 MSL.
 RWY 22R: Trees 1473 from DER, 579 right of centerline, 48 AGL/92 MSL.

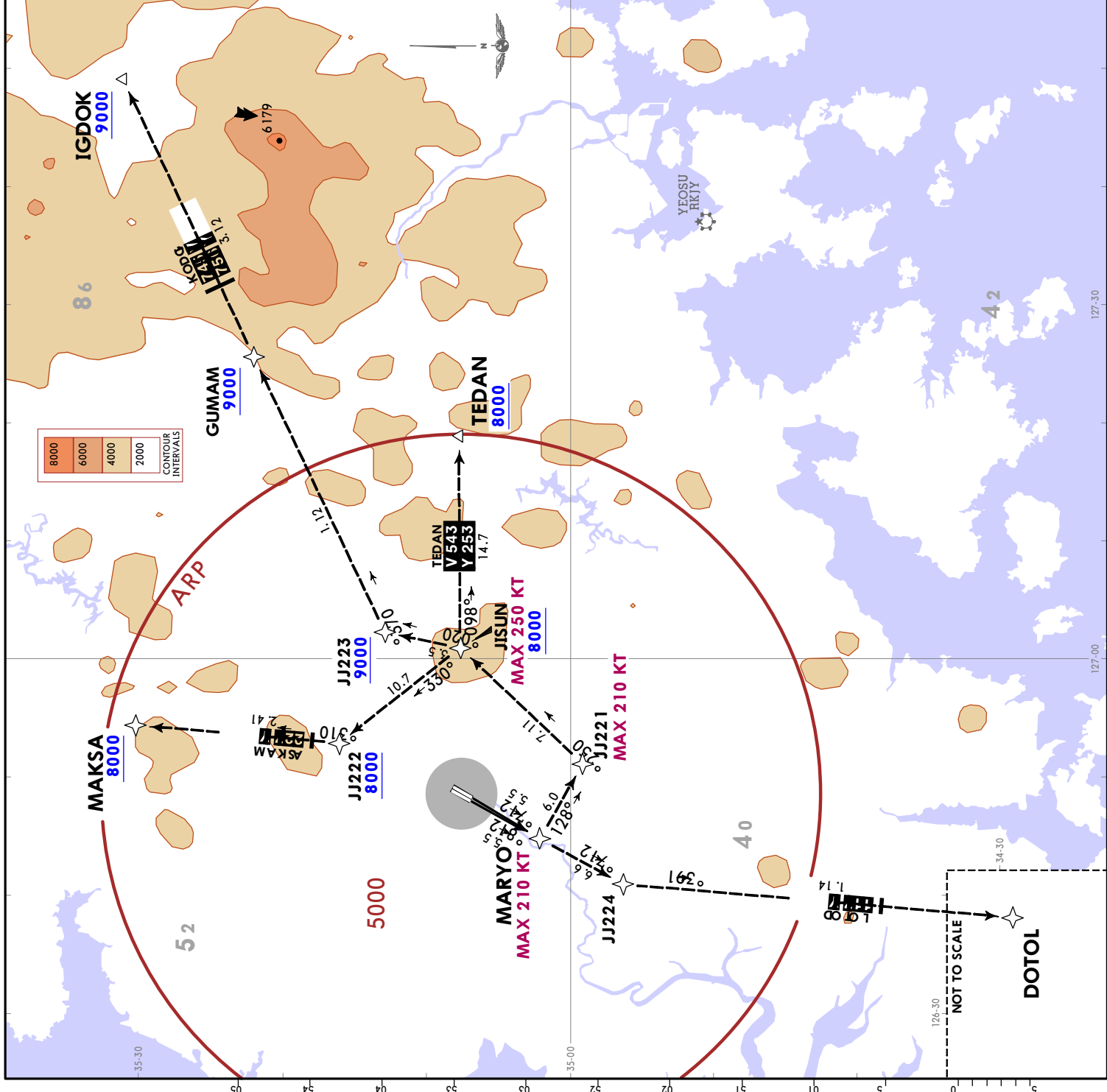
Minimum climb of 370 FT/NM to 8000.

Gnd speed-KT	75	100	150	200	250	300
370 FT/NM	463	617	925	1233	1542	1850

RWY	INITIAL CLIMB	TOP ALTITUDE
22L	Climb on course 218° to MARYO, then via transition routes and expect further clearance to field altitude after departure.	8000
22R	Climb on course 217° to MARYO, then via transition routes and expect further clearance to field altitude after departure.	8000

TRANSITIONS

DOTOL	From MARYO track 217° to JJ224 and track 193° to DOTOL.
IGDOK	From MARYO track 128° to JJ221 and track 052° to JISUN at or above 8000, then track 020° to JJ223 and track 073° to GUMAM and track 073° to IGDOK.
MAKSA	From MARYO track 128° to JJ221 and track 052° to JISUN at or above 8000, then track 330° to JJ222 and track 013° to MAKSA.
TEDAN	From MARYO track 128° to JJ221 and track 052° to JISUN at or above 8000, then track 098° to TEDAN.



RKJJ/KWJ

Apt Elev **48'**
N35 07.6 E126 48.5

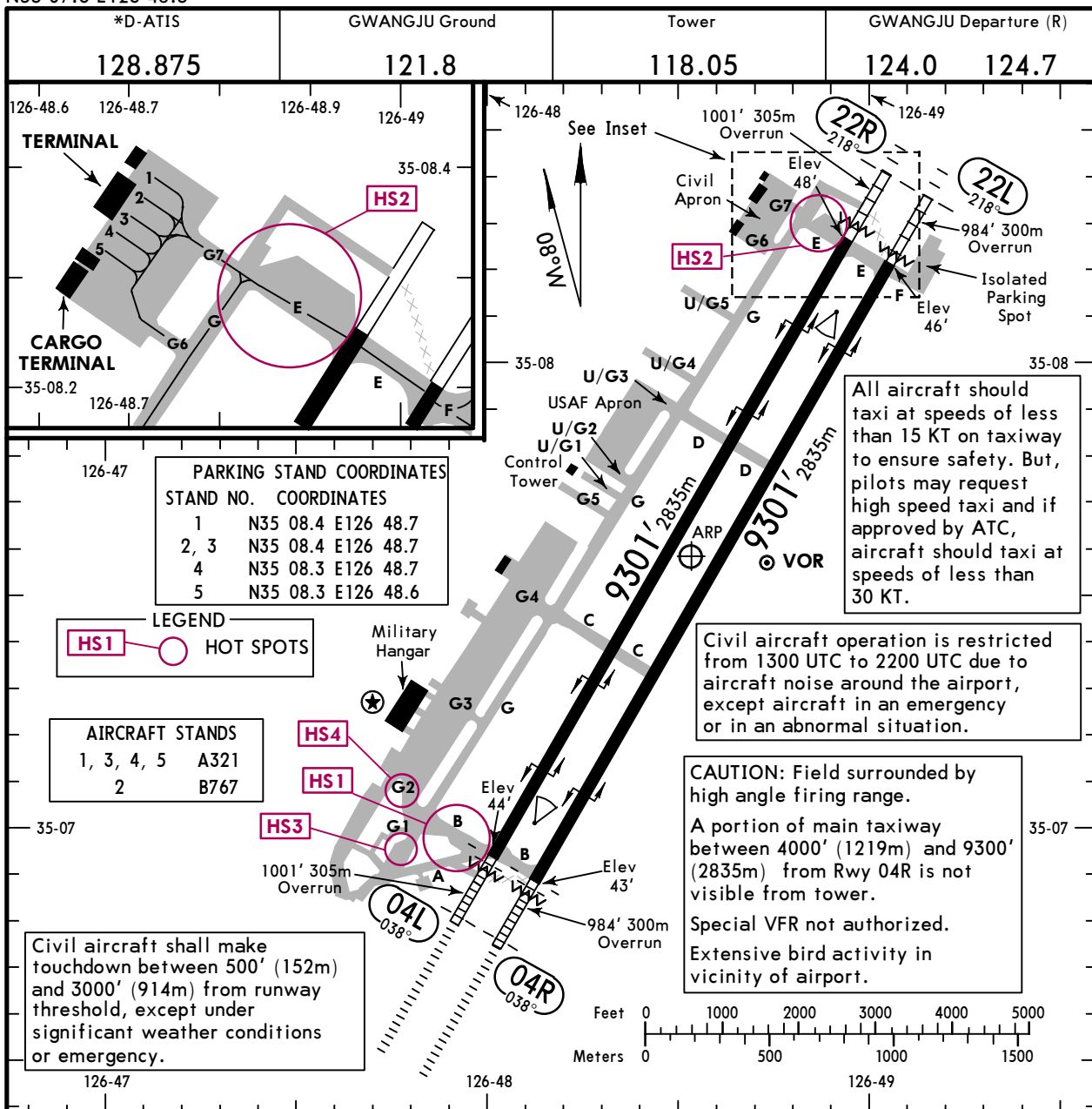


15 APR 22

10-9 Eff 20 Apr 1600Z

GWANGJU, KOREA

GWANGJU



PARKING STAND COORDINATES

STAND NO.	COORDINATES
1	N35 08.4 E126 48.7
2, 3	N35 08.4 E126 48.7
4	N35 08.3 E126 48.7
5	N35 08.3 E126 48.6

LEGEND
HS1 HOT SPOTS

AIRCRAFT STANDS

1, 3, 4, 5	A321
2	B767

Civil aircraft shall make touchdown between 500' (152m) and 3000' (914m) from runway threshold, except under significant weather conditions or emergency.

All aircraft should taxi at speeds of less than 15 KT on taxiway to ensure safety. But, pilots may request high speed taxi and if approved by ATC, aircraft should taxi at speeds of less than 30 KT.

Civil aircraft operation is restricted from 1300 UTC to 2200 UTC due to aircraft noise around the airport, except aircraft in an emergency or in an abnormal situation.

CAUTION: Field surrounded by high angle firing range.
 A portion of main taxiway between 4000' (1219m) and 9300' (2835m) from Rwy 04R is not visible from tower.
 Special VFR not authorized.
 Extensive bird activity in vicinity of airport.

ADDITIONAL RUNWAY INFORMATION

RWY	USABLE LENGTHS				WIDTH
	LANDING BEYOND THRESHOLD		TAKE-OFF		
04L 22R	HIRL (60m)	ALSF-I PAPI (angle 3.0°)	RVR		148' 45m
	HIRL (60m)	SSALF PAPI (angle 3.0°)	RVR		
04R 22L	HIRL (60m)	ALSF-I PAPI (angle 3.0°)	RVR	8346' 2544m	148' 45m
	HIRL (60m)	SSALF PAPI (angle 3.0°)	RVR		

HOT SPOTS

For information only, not to be construed as ATS instructions.

- HS1 HS2 High density traffic area, listen carefully to ATC instruction.
- HS3 HS4 Civil ACFT do not enter into G1, G2 without authorization from TWR.

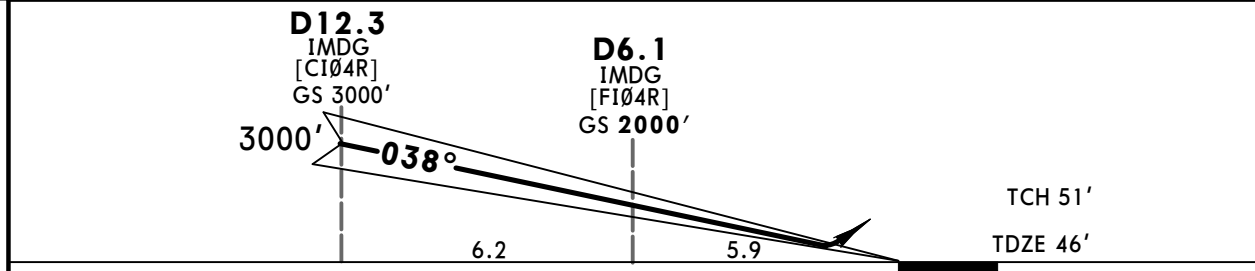
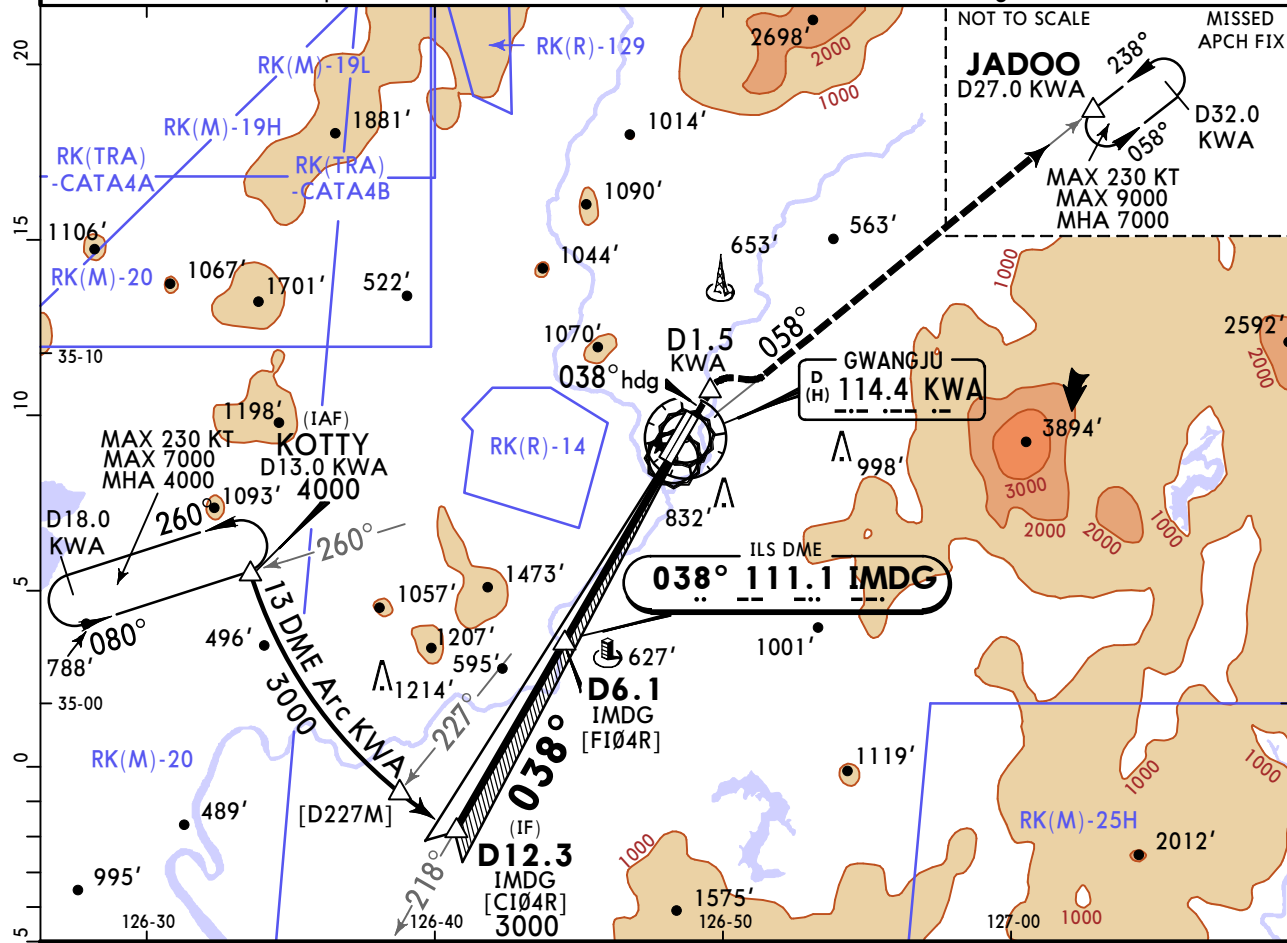
State	TAKE-OFF
Available Landing Minimums	

RKJJ/KWJ
GWANGJU

JEPPESSEN
15 APR 22
Eff 20 Apr 1600Z (11-1)

GWANGJU, KOREA
ILS DME Rwy 04R

*D-ATIS 128.875		GWANGJU Approach (R) 130.0 120.475		GWANGJU Tower 118.05	Ground 121.8
LOC IMDG 111.1	Final Apch Crs 038°	D6.1 IMDG 2000' (1954')	ILS DA(H) 246' (200')	Apt Elev 48' TDZE 46'	
MISSED APCH: Climb to 7000' on heading 038° to D1.5 KWA, and climbing RIGHT turn to intercept KWA VOR R-058 and track outbound on KWA VOR R-058 to JADOO and hold, continue climb-in-hold to 7000'.					
Alt Set: hPa		TDZ Elev: 2 hPa		Trans level: FL140	
				Trans alt: 14000'	
					MSA KWA VOR
1. VOR/DME or radar required. 2. Use IMDG DME when on the LOC Course. 3. Circling not authorized.					



Gnd speed-Kts	70	90	100	120	140	160	ALSF-I PAPI PAPI	7000' on 038° hdg	D1.5 KWA
GS	3.00°	372	478	531	637	743			

TERPS		STRAIGHT-IN LANDING	
		ILS	
		DA(H) 246' (200')	
FULL		ALS out	
A			
B			
C	200'- R24 or V1/2		200'- R40 or V3/4
D			

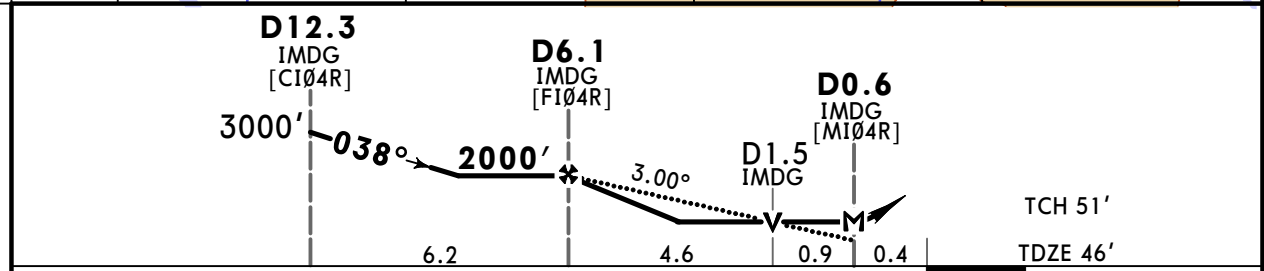
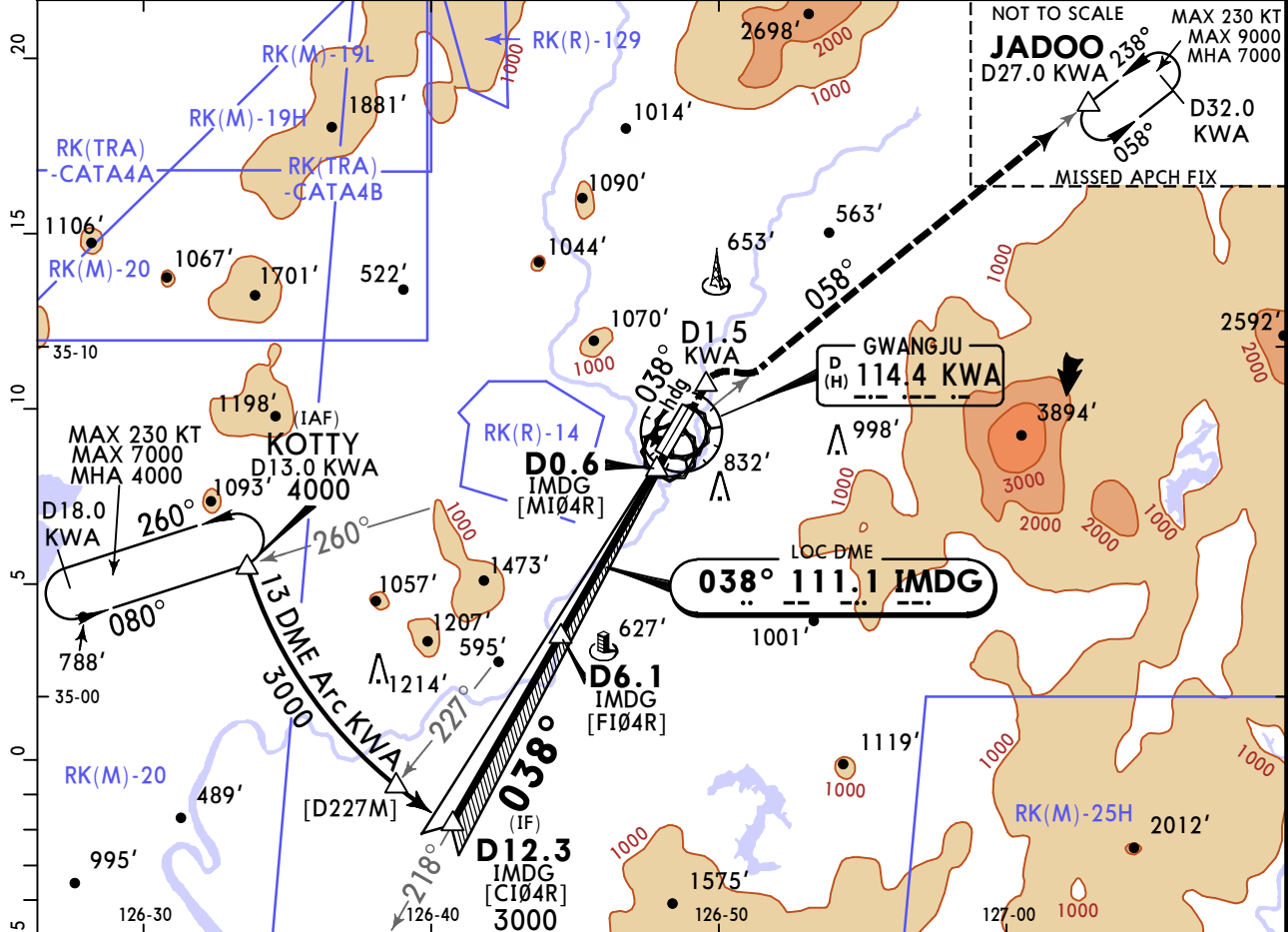
CHANGES: Procedure revised, new AOM concept.

RKJJ/KWJ
GWANGJU

JEPPESSEN
22 JUL 22 **(11-2)**

GWANGJU, KOREA
LOC DME Rwy 04R

*D-ATIS 128.875		GWANGJU Approach (R) 130.0 120.475		GWANGJU Tower 118.05	Ground 121.8
LOC IMDG 111.1	Final Apch Crs 038°	D6.1 IMDG 2000' (1954')	MDA(H) 520' (474')	Appt Elev 48' TDZE 46'	<p>MSA KWA VOR</p>
<p>MISSED APCH: Climb to 7000' on heading 038° to D1.5 KWA, and climbing RIGHT turn to intercept KWA VOR R-058 and track outbound on KWA VOR R-058 to JADOO and hold, continue climb-in-hold to 7000'.</p> <p>Alt Set: hPa TDZ Elev: 2 hPa Trans level: FL140 Trans alt: 14000'</p> <p>1. VOR/DME or radar required. 2. Use IMDG DME when on the LOC course.</p>					



Gnd speed-Kts	70	90	100	120	140	160	ALSF-I PAPI PAPI	7000' on 038° ↑ hdg	D1.5 KWA
Descent Angle	3.00°	372	478	531	637	849			
MAP at D0.6 IMDG									

TERPS		STRAIGHT-IN LANDING		CIRCLE-TO-LAND	
		MDA(H) 520' (474')		Circling not authorized for west of Rwy 04/22	
		ALS out		Max Kts	MDA(H)
A	500'- R40 or V3/4	500'- R55 or V1		90	720' (672') 700'- V1
B				120	1140' (1092') 1100'- V1 1/2
C				140	1140' (1092') 1100'- V3
D	500'- R50 or V1	500'- V1 3/8		165	1380' (1332') 1400'- V3

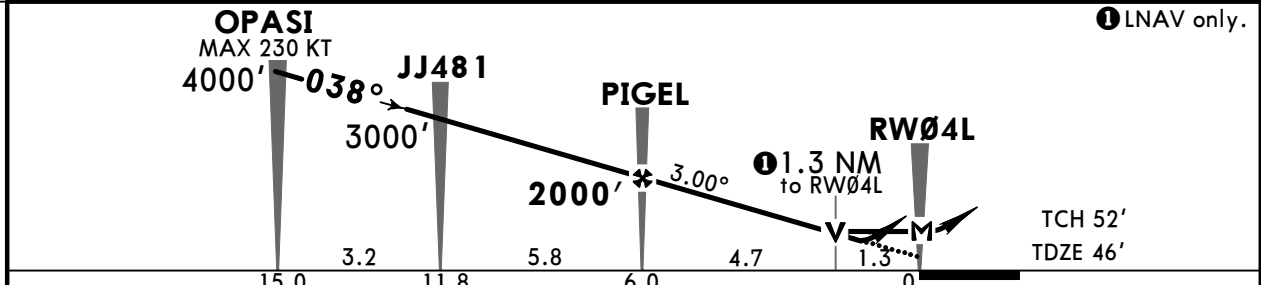
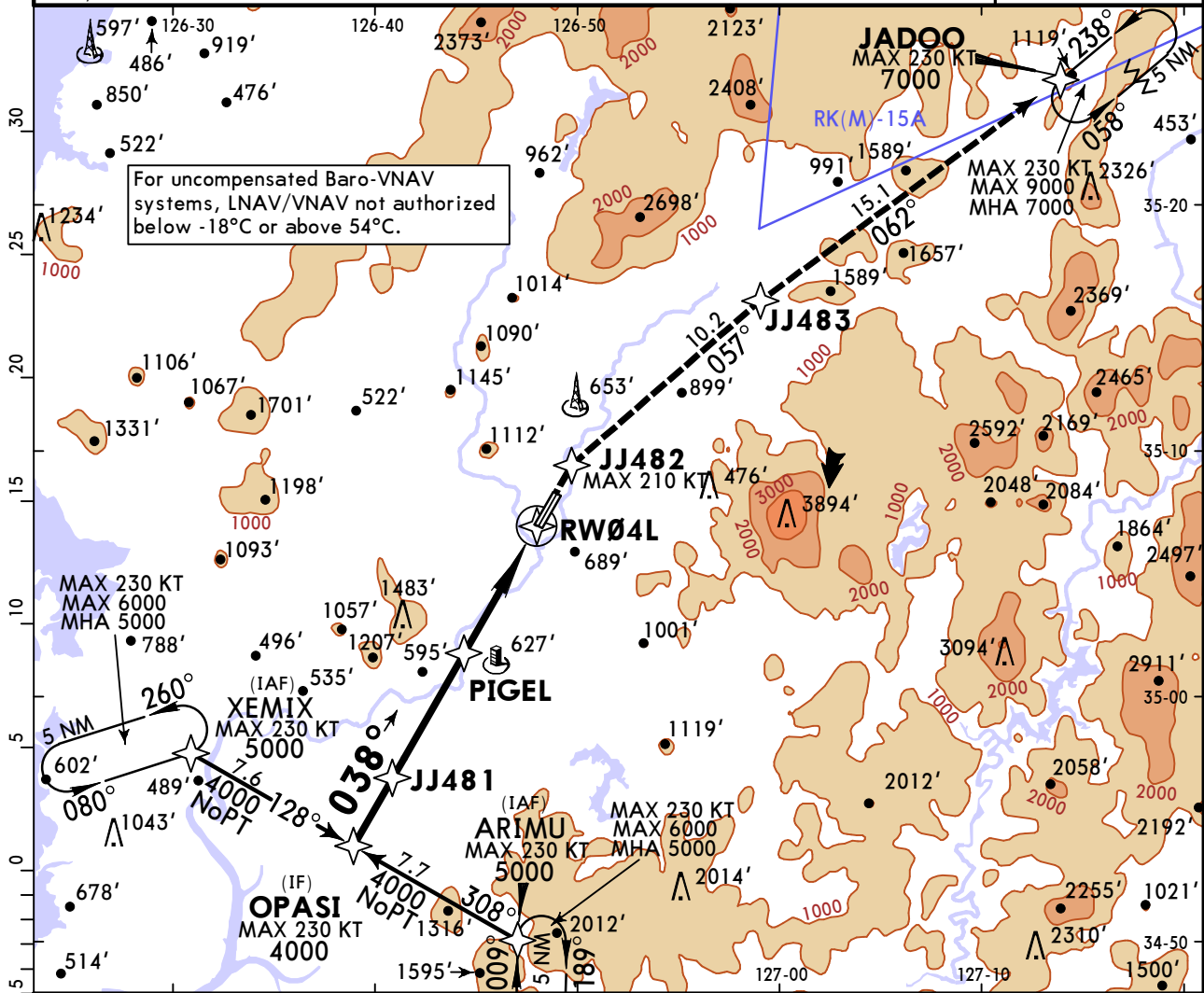
RKJJ/KWJ
GWANGJU

JEPPESEN

GWANGJU, KOREA
RNP Rwy 04L

14 APR 23 (12-1) Eff 19 Apr 1600Z

*D-ATIS 128.875		GWANGJU Approach (R) 120.475 130.0		GWANGJU Tower 118.05	Ground 121.8
RNAV	Final Apch Crs 038°	PIGEL 2000' (1954')	RNAV/VNAV DA(H) 319' (273')	Apt Elev 48' TDZE 46'	5000 MSA RW04L
MISSED APCH: Climb to 7000' on direct to JJ482 and track 057° to JJ483 and track 062° to JADOO and hold, continue climb-in-hold to 7000'.					
Alt Set: hPa		TDZ Elev: 2 hPa	Trans level: FL140	Trans alt: 14000'	
RNP Apch. GNSS required. RNP 0.3 required.					
DME/DME RNP 0.3 not authorized.					



Gnd speed-Kts	70	90	100	120	140	160	ALS F-I PAPI PAPI	7000'	JJ482	057°	JJ483
Glide Path Angle	3.00°	372	478	531	637	849					
MAP at RW04L											

TERPS	STRAIGHT-IN LANDING				CIRCLE-TO-LAND		
	LNAV/VNAV		LNAV		Circling not authorized west of Rwy 04/22		
	DA(H) 319' (273')		MDA(H) 520' (474')				
	ALS out		ALS out		Max Kts	MDA(H)	
A					90	720' (672)	700'- V1 3/8
B	300'- R24 or V1/2	300'- R45 or V7/8	500'- R50 or V1	500'- V1 3/8	120	1140' (1092')	1100'- V1 1/2
C					140	1140' (1092')	1100'- V3
D					165	1380' (1332')	1400'- V3

CHANGES: Waypoint identis.

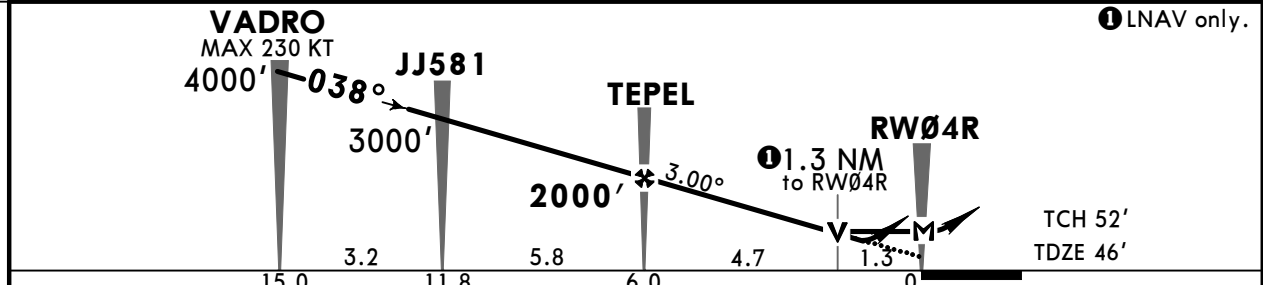
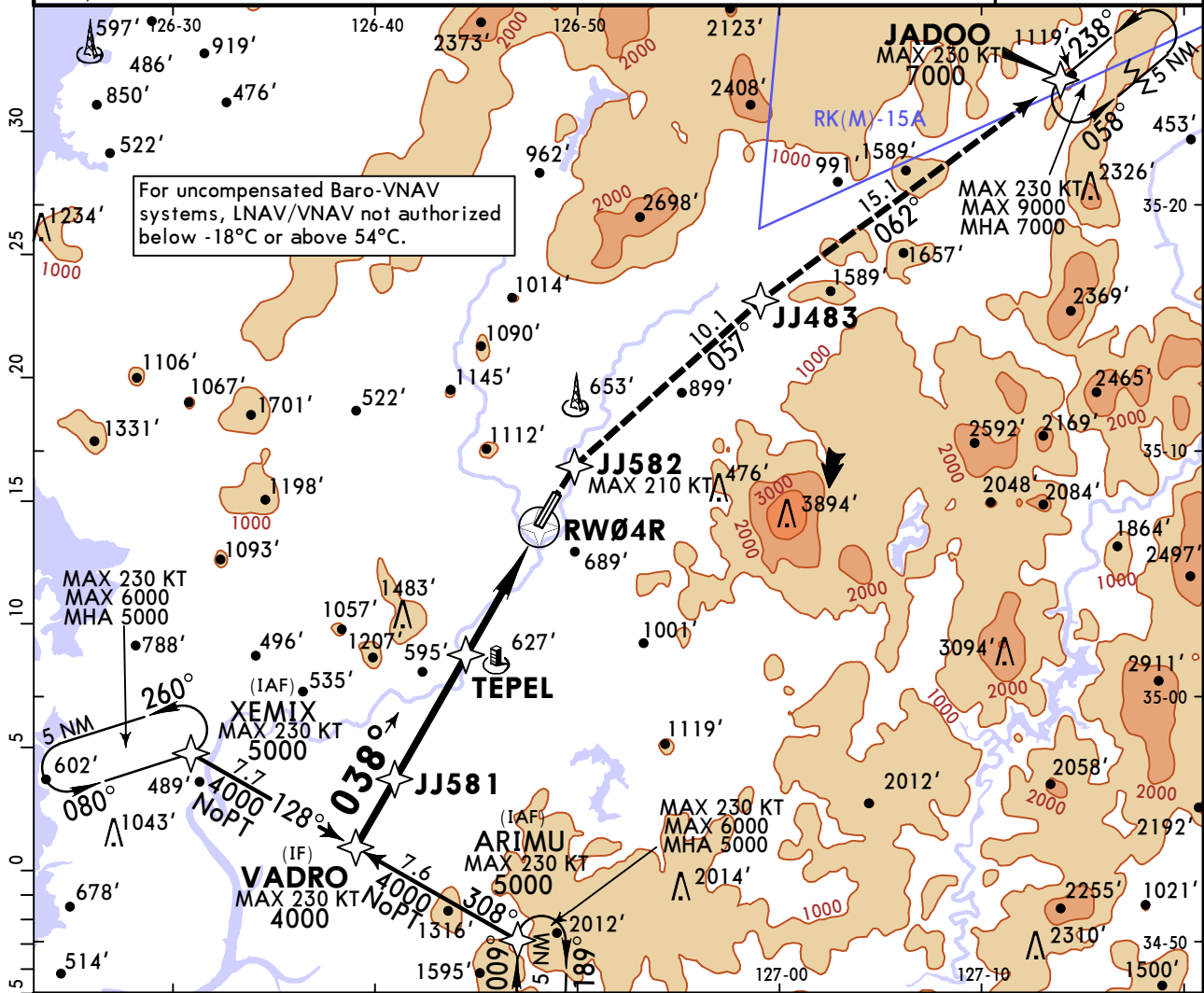
RKJJ/KWJ
GWANGJU

JEPPESEN

GWANGJU, KOREA
RNP Rwy 04R

14 APR 23 (12-2) Eff 19 Apr 1600Z

*D-ATIS 128.875		GWANGJU Approach (R) 120.475 130.0		GWANGJU Tower 118.05		Ground 121.8			
RNAV	Final Apch Crs 038°	TEPEL 2000' (1954')	LNAV/VNAV DA(H) 319' (273')		Apt Elev 48'	TDZE 46'			
MISSED APCH: Climb to 7000' on direct to JJ582 and track 057° to JJ483 and track 062° to JADOO and hold, continue climb-in-hold to 7000'.						5000 MSA RW04R			
Alt Set: hPa		TDZ Elev: 2 hPa		Trans level: FL140				Trans alt: 14000'	
RNP Apch. GNSS required. RNP 0.3 required.									
DME/DME RNP 0.3 not authorized.									



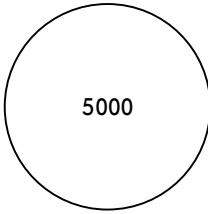
Gnd speed-Kts	70	90	100	120	140	160	7000'	JJ582	057°	JJ483
Glide Path Angle	3.00°	372	478	531	637	849				
MAP at RW04R										

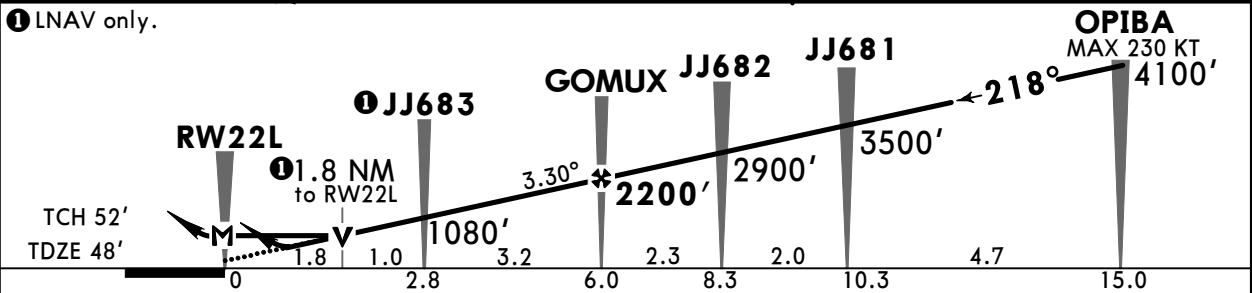
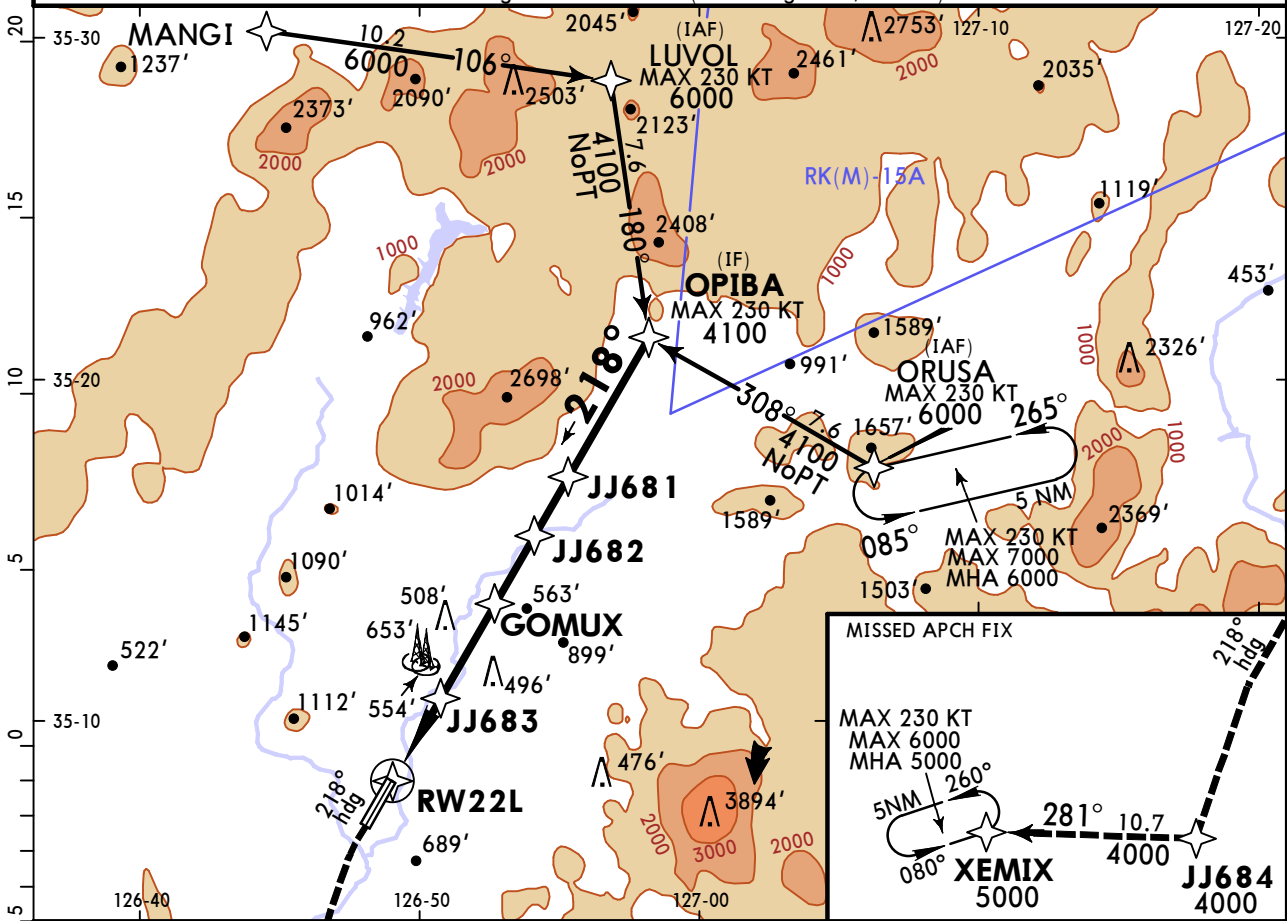
TERPS	STRAIGHT-IN LANDING				CIRCLE-TO-LAND	
	LNAV/VNAV		LNAV		Circling not authorized west of Rwy 04/22	
	DA(H) 319' (273')		MDA(H) 520' (474')			
	ALS out		ALS out		Max Kts	MDA(H)
A					90	720' (672)
B	300'- R24 or V1/2	300'- R45 or V7/8	500'- R55 or V1	500'- V1 3/8	120	1140' (1092')
C					140	1140' (1092')
D					165	1380' (1332')

RKJJ/KWJ
GWANGJU

JEPPESEN
14 APR 23 **(12-3)** Eff 19 Apr 1600Z

GWANGJU, KOREA
RNP Rwy 22L

*D-ATIS 128.875	GWANGJU Approach (R) 120.475 130.0		GWANGJU Tower 118.05		Ground 121.8
RNAV	Final Apch Crs 218°	GOMUX 2200' (2152')	LNAV/VNAV DA(H) 568' (520')		Apt Elev 48' TDZE 48'
MISSED APCH: Climb heading 218° to 1000', then climbing LEFT turn direct to JJ684 at or above 4000', then track 281° to XEMIX at or above 5000' and hold. CAUTION: Missed apch climb rate to 4000' Missed approach requires minimum climb of 320'/NM to 4000' (ATC).					 5000 MSA RW22L
Alt Set: hPa		TDZ Elev: 2 hPa	Trans level: FL140	Trans alt: 14000'	
RNP Apch. GNSS required. RNP 0.3 required.					
1. DME/DME RNP 0.3 not authorized. 2. For uncompensated Baro-VNAV systems, LNAV/VNAV not authorized below -18°C or above 54°C. 3. VGSI and descent angle not coincident (VGSI Angle 3.0/TCH 51).					



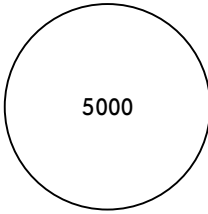
Gnd speed-Kts	70	90	100	120	140	160	SSALF	1000'	218° hdg	4000'	JJ684
Glide Path Angle	3.30°	409	526	584	701	817	934	PAPI			
MAP at RW22L											

TERPS	STRAIGHT-IN LANDING				C	CIRCLE-TO-LAND		
	LNAV/VNAV		LNAV			Circling not authorized west of Rwy 04/22		
	DA(H) 568' (520')		MDA(H) 660' (612')		Max Kts.	MDA(H)		
	ALS out		ALS out			90	720' (672)	700' - V1 3/4
A	600' - V1 3/8		700' - V1 1/2			120	1140' (1092')	1100' - V1 3/4
B	600' - V1 5/8		700' - V1 3/4			140	1140' (1092')	1100' - V3
C	600' - V1 5/8		700' - V1 3/4			165	1380' (1332')	1400' - V3

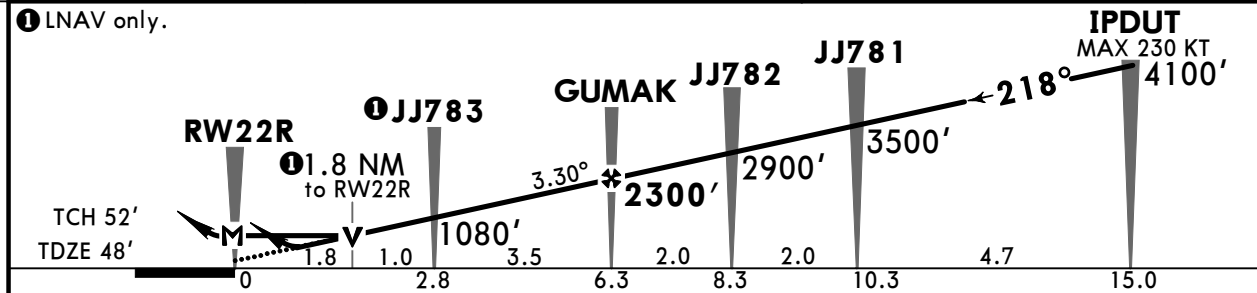
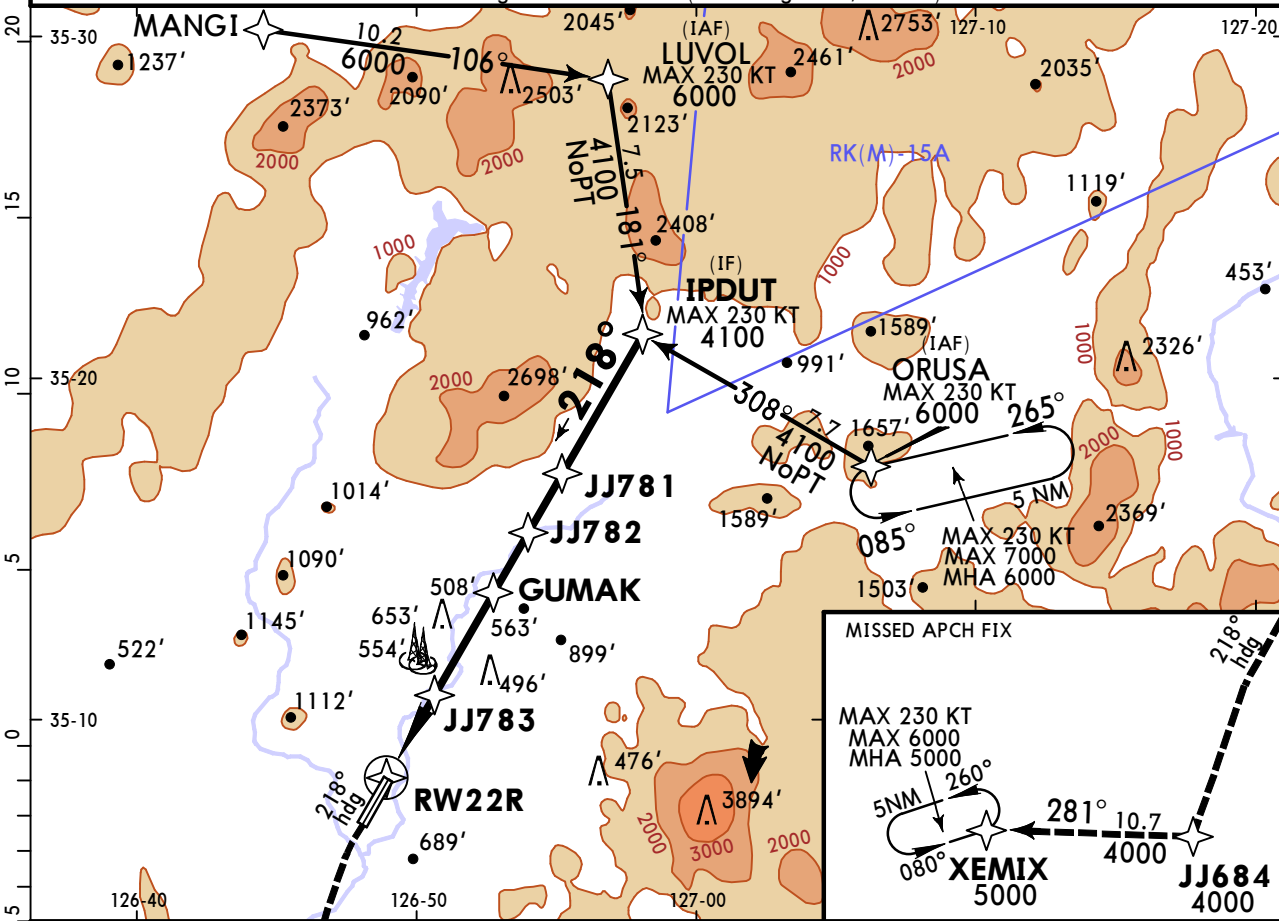
RKJJ/KWJ
GWANGJU

JEPPESEN
14 APR 23 (12-4) Eff 19 Apr 1600Z

GWANGJU, KOREA
RNP Rwy 22R

*D-ATIS 128.875	GWANGJU Approach (R) 120.475 130.0		GWANGJU Tower 118.05		Ground 121.8
RNAV	Final Apch Crs 218°	GUMAK 2300' (2252')	LNAV/VNAV DA(H) 568' (520')		Apt Elev 48' TDZE 48'
MISSED APCH: Climb heading 218° to 1000', then climbing LEFT turn direct to JJ684 at or above 4000', then track 281° to XEMIX at or above 5000' and hold.					 5000 MSA RW22R
CAUTION: Missed apch climb rate to 4000' Missed approach requires minimum climb of 320'/NM to 4000' (ATC).					
Alt Set: hPa		TDZ Elev: 2 hPa	Trans level: FL140		
RNP Apch. GNSS required. RNP 0.3 required.					

1. DME/DME RNP 0.3 not authorized. 2. For uncompensated Baro-VNAV systems, LNAV/VNAV not authorized below -18°C or above 54°C. 3. VGSI and descent angle not coincident (VGSI Angle 3.0/TCH 53).



Gnd speed-Kts	70	90	100	120	140	160	SSALF	1000'	218° hdg	4000'	JJ684
Glide Path Angle	3.30°	409	526	584	701	817	PAPI	↑		LT	

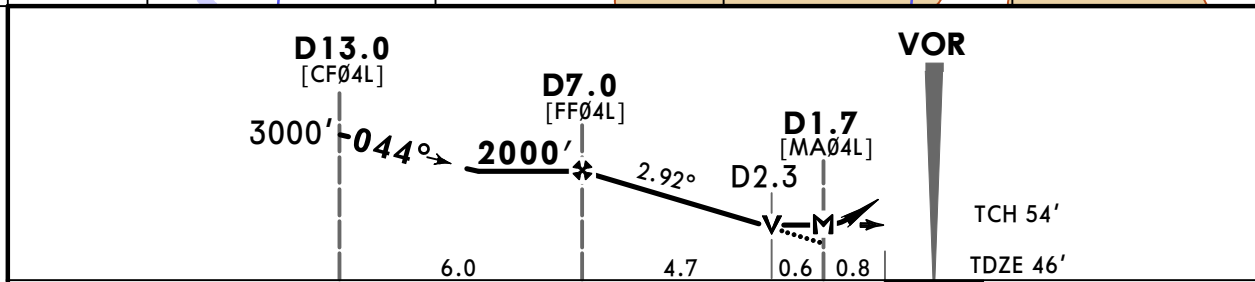
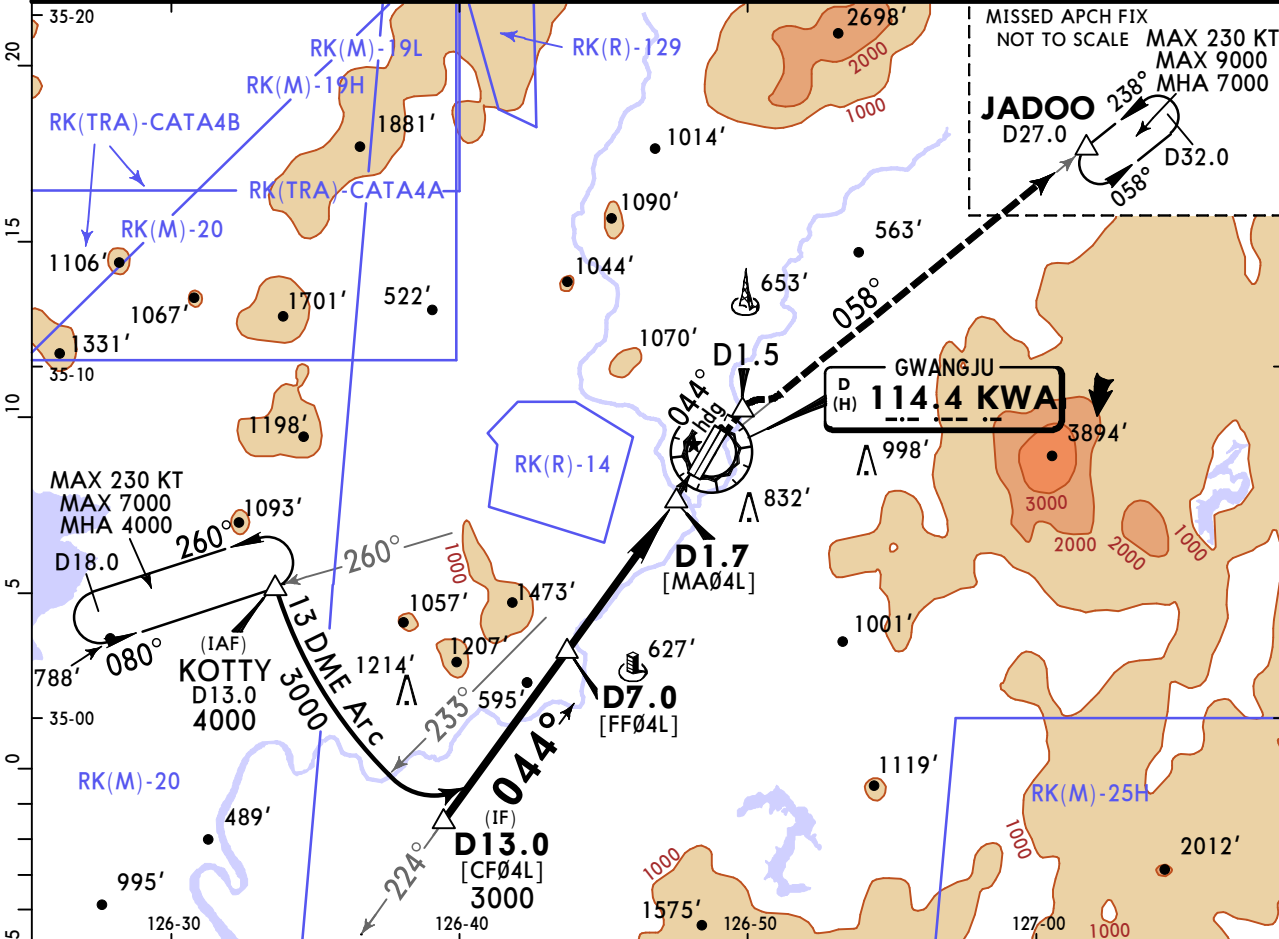
TERPS	STRAIGHT-IN LANDING				CIRCLE-TO-LAND	
	LNAV/VNAV		LNAV		Circling not authorized west of Rwy 04/22	
	DA(H) 568' (520')		MDA(H) 660' (612')			
	ALS out		ALS out		Max Kts	MDA(H)
A					90	720' (672)
B	600'-V1 3/8	600'-V1 5/8	700'-V1 1/2	700'-V1 3/4	120	1140' (1092')
C					140	1140' (1092')
D					165	1380' (1332')

RKJJ/KWJ
GWANGJU

JEPPESEN
15 APR 22
Eff 20 Apr 1600Z **(13-1)**

GWANGJU, KOREA
VOR DME Rwy 04L

*D-ATIS	GWANGJU Approach (R)		GWANGJU Tower		Ground
128.875	130.0	120.475	118.05	121.8	
VOR KWA 114.4	Final Apch Crs 044°	D7.0 2000' (1954')	MDA(H) 560' (514')	Apt Elev 48'	TDZE 46'
MISSED APCH: Climb to 7000' on heading 044° to D1.5, and climbing RIGHT turn to intercept KWA VOR R-058 and track on KWA VOR R-058 to JADOO and hold, continue climb-in-hold to 7000'.					
Alt Set: hPa	TDZ Elev: 2 hPa	Trans level: FL140	Trans alt: 14000'		



Gnd speed-Kts	70	90	100	120	140	160	ALSIF-I PAPI PAPI	7000' on 044° hdg	D1.5	
Descent Angle	2.92°	362	465	517	620	723				826
MAP at D1.7										

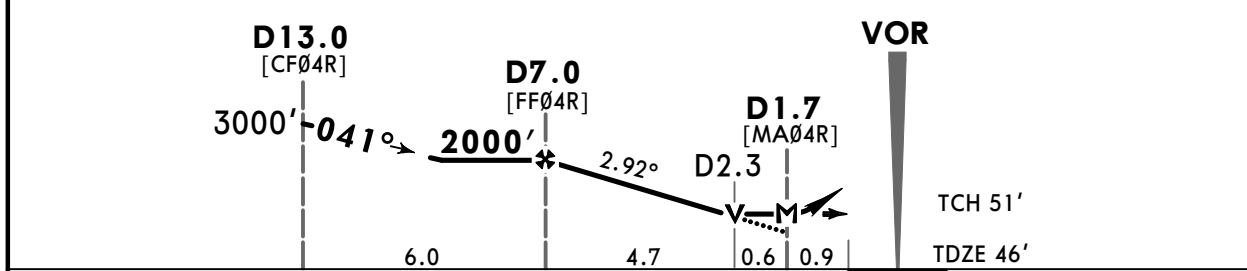
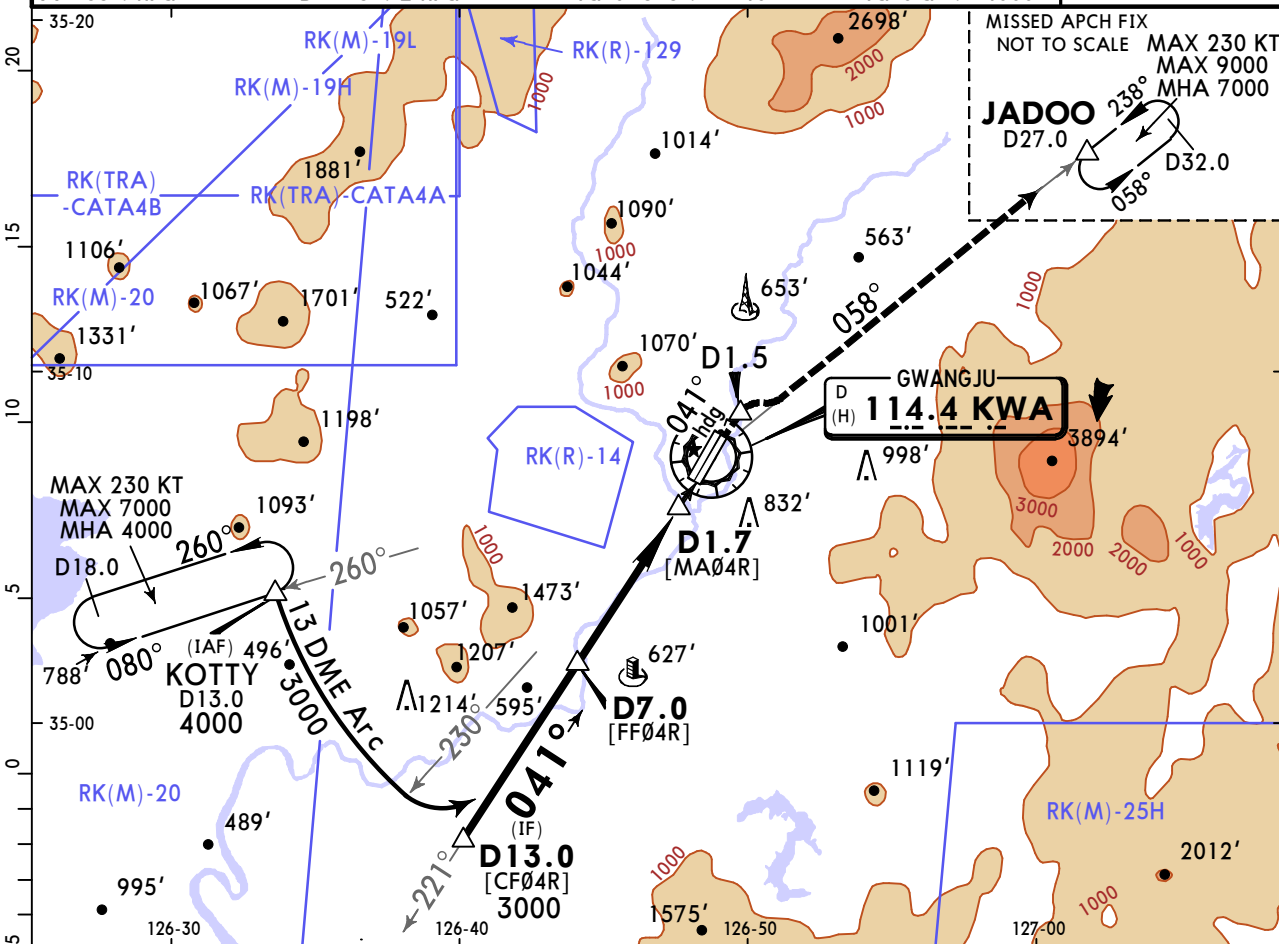
TERPS		STRAIGHT-IN LANDING		CIRCLE-TO-LAND	
		MDA(H) 560' (514')		Circling not authorized for west of Rwy 04/22	
		ALS out		Max Kts	MDA(H)
A	600'- R40 or V3/4	600'- R55 or V1		90	720' (672') 700'- V1
B	600'- R40 or V3/4	600'- R55 or V1		120	1140' (1092') 1100'- V1 1/2
C	600'- R55 or V1	600'- V1 3/8		140	1140' (1092') 1100'- V3
D	600'- R55 or V1	600'- V1 3/8		165	1380' (1332') 1400'- V3

RKJJ/KWJ
GWANGJU

JEPPESEN
15 APR 22
Eff 20 Apr 1600Z **(13-2)**

GWANGJU, KOREA
VOR DME Rwy 04R

*D-ATIS	GWANGJU Approach (R)		GWANGJU Tower		Ground
128.875	130.0	120.475	118.05	121.8	
VOR KWA 114.4	Final Apch Crs 041°	D7.0 2000' (1954')	MDA(H) 560' (514')	Apt Elev 48'	TDZE 46'
MISSED APCH: Climb to 7000' on heading 041° to D1.5, and climbing RIGHT turn to intercept KWA VOR R-058 and track on KWA VOR R-058 to JADOO and hold, continue climb-in-hold 7000'.					
Alt Set: hPa	TDZ Elev: 2 hPa	Trans level: FL140	Trans alt: 14000'		



Gnd speed-Kts	70	90	100	120	140	160	ALSIF-I PAPI PAPI	7000' on 041° hdg	D1.5
Descent Angle	2.92°	362	465	517	620	723			
MAP at D1.7									

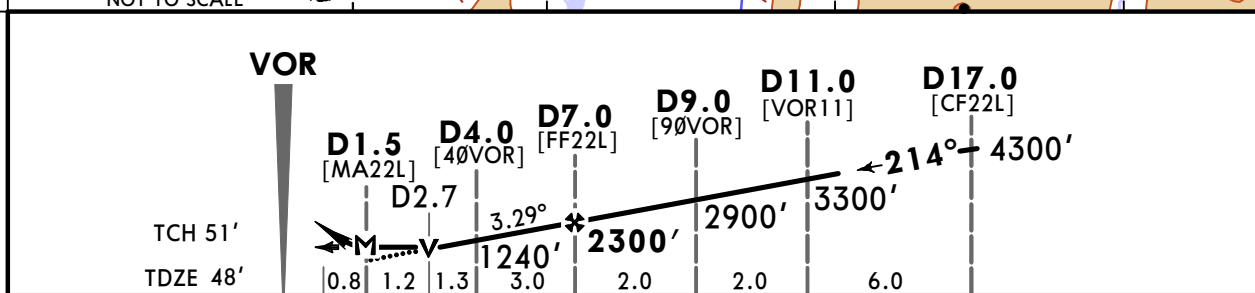
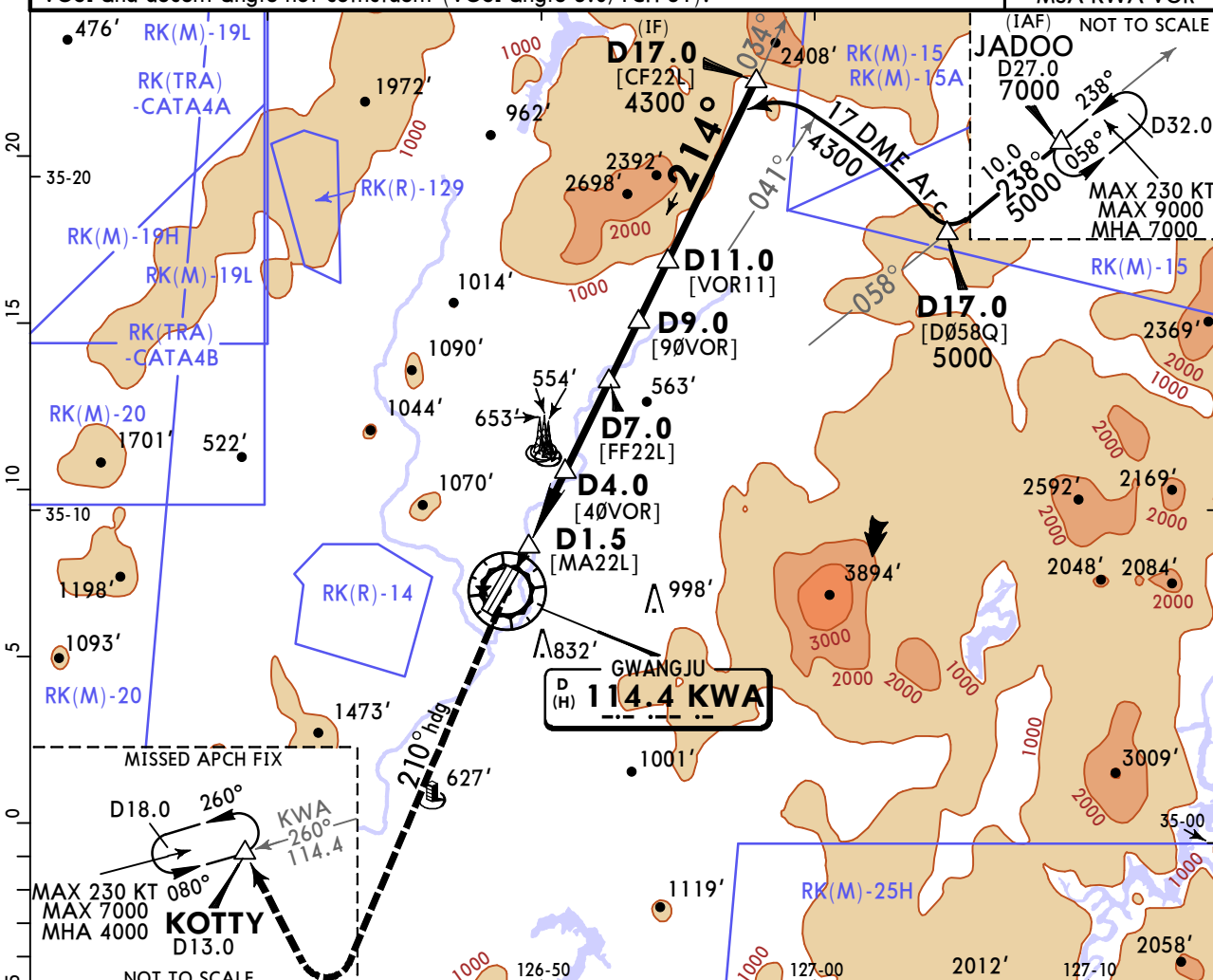
TERPS		STRAIGHT-IN LANDING		CIRCLE-TO-LAND	
		MDA(H) 560' (514')		Circling not authorized for west of Rwy 04/22	
		ALS out		Max Kts	MDA(H)
A	600'- R40 or V3/4	600'- R55 or V1		90	720' (672') 700'- V1
B	600'- R40 or V3/4	600'- R55 or V1		120	1140' (1092') 1100'- V1 1/2
C	600'- R55 or V1	600'- V1 3/8		140	1140' (1092') 1100'- V3
D	600'- R55 or V1	600'- V1 3/8		165	1380' (1332') 1400'- V3

RKJJ/KWJ
GWANGJU

JEPPESEN
15 APR 22
Eff 20 Apr 1600Z **(13-3)**

GWANGJU, KOREA
VOR DME Rwy 22L

*D-ATIS 128.875		GWANGJU Approach (R) 130.0 120.475		GWANGJU Tower 118.05	Ground 121.8
VOR KWA 114.4	Final Apch Crs 214°	D7.0 2300' (2252')	MDA(H) 740' (692')	Apt Elev 48' TDZE 48'	<p>MSA KWA VOR</p>
MISSED APCH: Climb to 4000' on heading 210°, then RIGHT turn direct to KOTTY and hold.					
Alt Set: hPa		TDZ Elev: 2 hPa	Trans level: FL140	Trans alt: 14000'	
VGSI and decent angle not coincident (VGSI angle 3.0/TCH 51).					



Gnd speed-Kts	70	90	100	120	140	160	SSALF PAPI PAPI	4000' on 210° hdg
Descent Angle 3.29°	407	524	582	699	815	931		
MAP at D1.5								

TERPS	STRAIGHT-IN LANDING		CIRCLE-TO-LAND	
	MDA(H) 740' (692')		Circling not authorized for west of Rwy 04/22	
	ALS out		Max Kts	MDA(H)
	A	700'- R40 or V3/4	90	740' (692') 700'- V1
	B		120	1140' (1092') 1100'- V1 1/2
C		140	1140' (1092') 1100'- V3	
D	700'- V1 3/4	700'- V2	165	1380' (1332') 1400'- V3

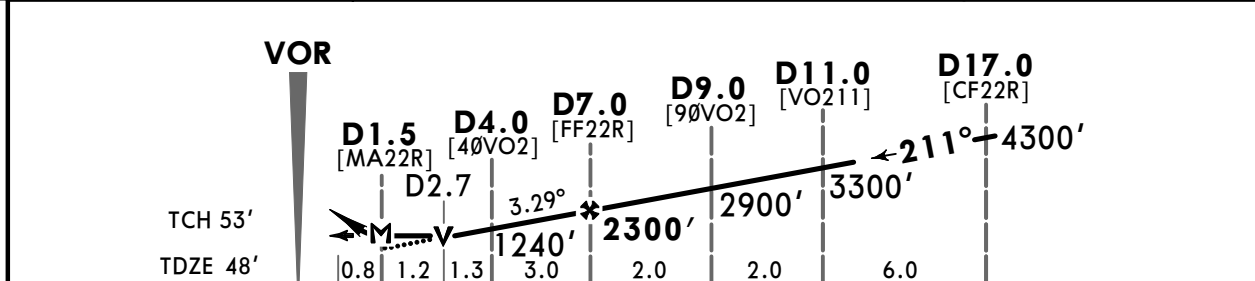
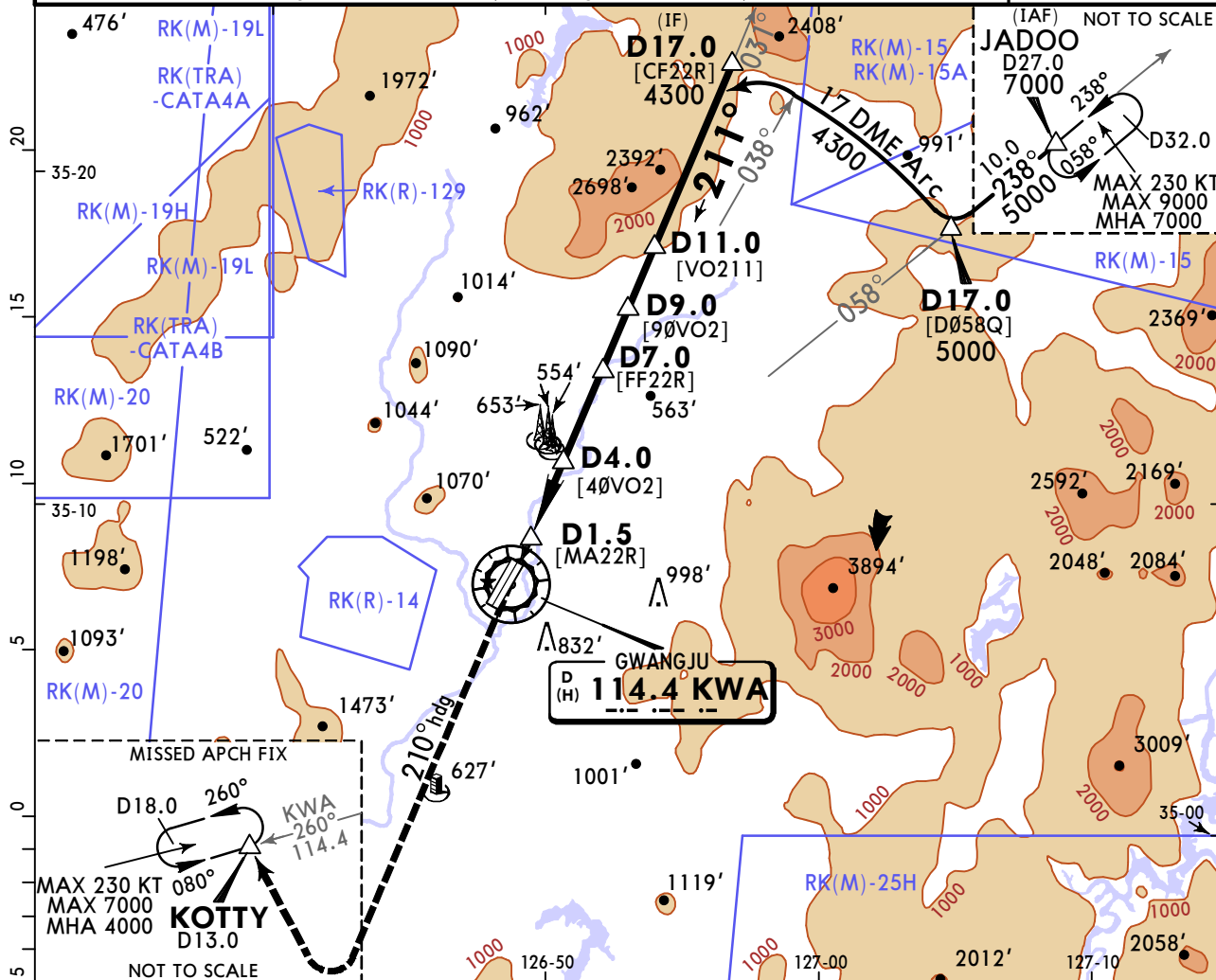
CHANGES: Procedure revised, new AOM concept.

RKJJ/KWJ
GWANGJU

JEPPESEN
15 APR 22
Eff 20 Apr 1600Z (13-4)

GWANGJU, KOREA
VOR DME Rwy 22R

*D-ATIS 128.875		GWANGJU Approach (R) 130.0 120.475		GWANGJU Tower 118.05	Ground 121.8
VOR KWA 114.4	Final Apch Crs 211°	D7.0 2300' (2252')	MDA(H) 740' (692')	Apt Elev 48' TDZE 48'	<p>MSA KWA VOR</p>
MISSED APCH: Climb to 4000' on heading 210°, then RIGHT turn direct to KOTTY and hold.					
Alt Set: hPa TDZ Elev: 2 hPa Trans level: FL140 Trans alt: 14000'					
VGSI and descent angle not coincident (VGSI angle 3.0/TCH 53).					



Gnd speed-Kts	70	90	100	120	140	160	SSALF PAPI PAPI	4000' on 210° hdg
Descent Angle 3.29°	407	524	582	699	815	931		
MAP at D1.5								

TERPS	STRAIGHT-IN LANDING MDA(H) 740' (692')		CIRCLE-TO-LAND Circling not authorized for west of Rwy 04/22	
	ALS out		Max Kts	MDA(H)
	A	700'- R40 or V3/4	700'- R55 or V1	90 740' (692') 700'- V1
	B			120 1140' (1092') 1100'- V1 1/2
	C			140 1140' (1092') 1100'- V3
D	700'- V1 3/4	700'- V2		165 1380' (1332') 1400'- V3

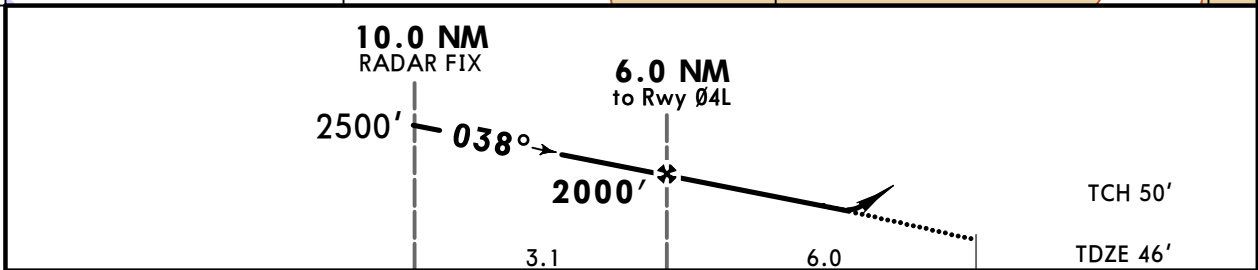
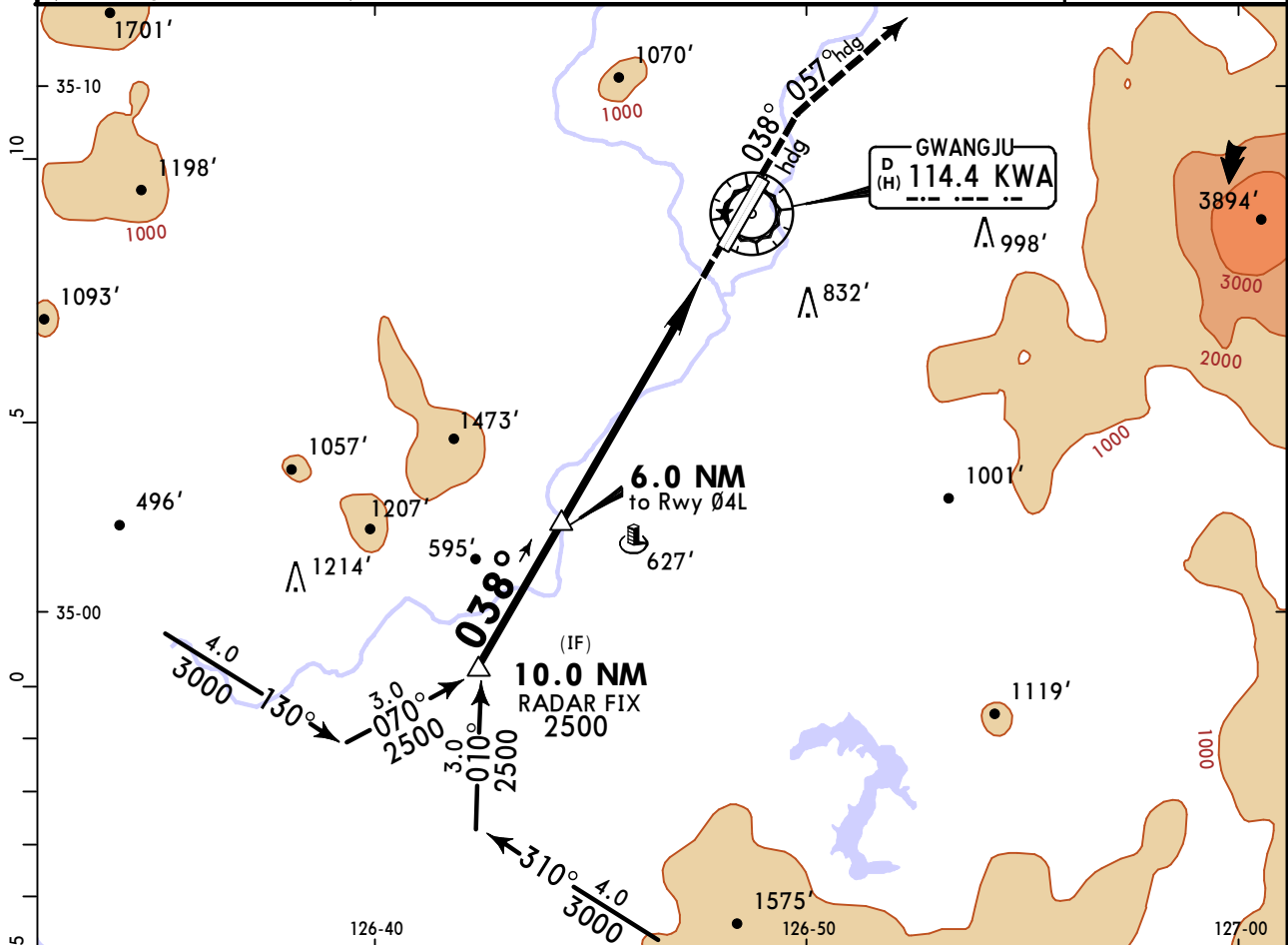
CHANGES: Procedure revised, new AOM concept.

RKJJ/KWJ
GWANGJU

JEPPESEN
22 JUL 22 (18-1)

GWANGJU, KOREA
PAR Rwy 04L

*D-ATIS 128.875		GWANGJU Approach (R) 130.0 120.475		GWANGJU Tower 118.05	Ground 121.8
RADAR	Final Apch Crs 038°	6.0 NM to Rwy 04L 2000' (1954')	DA(H) 246' (200')	Apt Elev 48'	TDZE 46'
MISSED APCH: Climb heading 038° to 800', then climbing RIGHT turn heading 057° maintain 5000' and assigned heading for radar vector.					
Alt Set: hPa TDZ Elev: 2 hPa Trans level: FL140 Trans alt: 14000'					
1. Circling not authorized. 2. VGSI and descent angle not coincident (VGSI angle 3.00°/TCH 54').					
					MSA KWA VOR



Gnd speed-Kts	70	90	100	120	140	160
PAR GS	372	478	531	637	743	849

ALSF-I
PAPI PAPI

800'
↑

038°
hdg

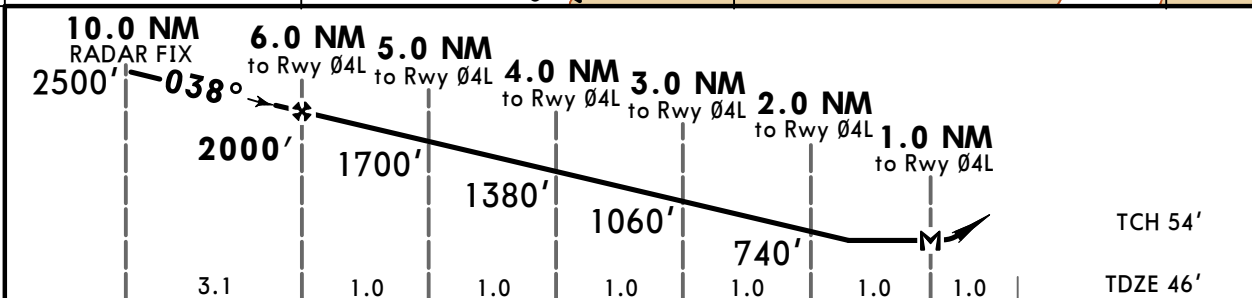
TERPS		STRAIGHT-IN LANDING	
		PAR	
		DA(H) 246' (200')	
		ALS out	
A	200' - R24 or V1/2		200' - R40 or V3/4
B			
C			
D			
E			

RKJJ/KWJ
GWANGJU

JEPPESSEN
22 JUL 22 (18-2)

GWANGJU, KOREA
ASR Rwy 04L

*D-ATIS 128.875		GWANGJU Approach (R) 130.0 120.475		GWANGJU Tower 118.05	Ground 121.8
RADAR	Final Apch Crs 038°	6.0 NM to Rwy 04L 2000' (1954')	MDA(H) 560' (514')	Apt Elev 48'	
MISSED APCH: Climb to 1300' on heading 038°, then climbing RIGHT turn heading 057° to 5000' then expect radar vector.					
Alt Set: hPa	TDZ Elev: 2 hPa	Trans level: FL140	Trans alt: 14000'		



Gnd speed-Kts	70	90	100	120	140	160	
VDA	2.99°	370	476	529	635	741	846
MAP at 1.0 NM to Rwy 04L							

ALSF-I
PAPI PAPI

1300'
↑

038°
hdg

TERPS		STRAIGHT-IN LANDING	
		MDA(H) 560' (514')	
		ALS out	
A	600'- R40 or V3/4	600'- R60 or V1 1/4	
B			
C			
D	600'- R55 or V1	600'- V1 3/8	
E			

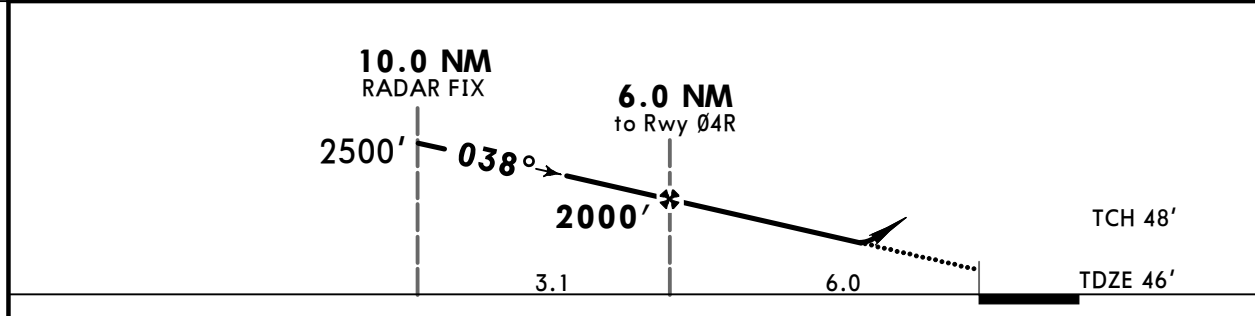
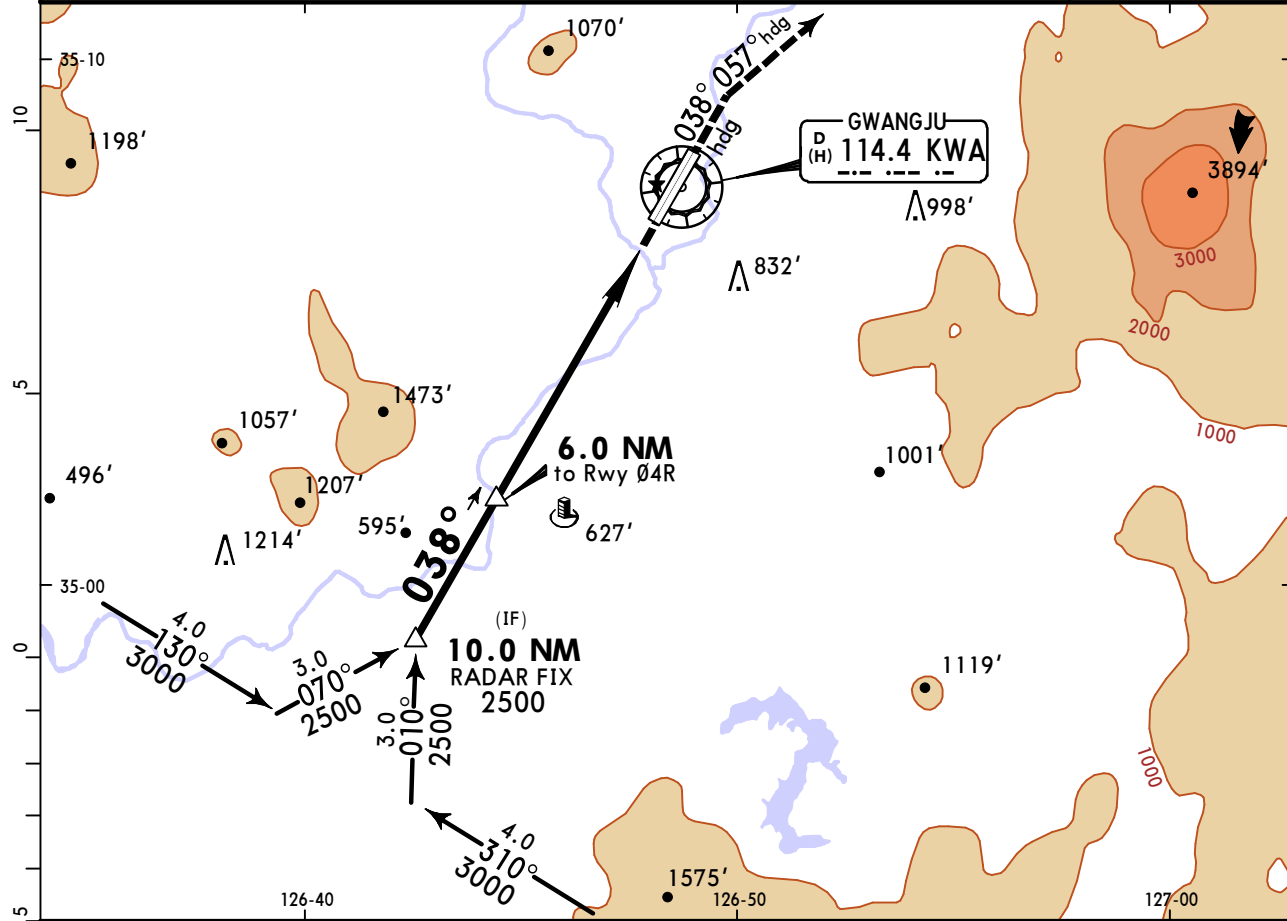
TERPS		CIRCLE-TO-LAND	
		Circling not authorized for west of Rwy 04/22	
Max Kts	MDA(H)		
90	720' (672')	700' -V1 1/4	
120	1140' (1092')	1100' -V1 1/2	
140	1140' (1092')	1100' -V3	
165	1380' (1332')	1400' -V3	
E	1460' (1412')	1500' -V3	

RKJJ/KWJ
GWANGJU

JEPPESSEN
22 JUL 22 **(18-3)**

GWANGJU, KOREA
PAR Rwy 04R

*D-ATIS 128.875		GWANGJU Approach (R) 130.0 120.475		GWANGJU Tower 118.05	Ground 121.8
RADAR	Final Apch Crs 038°	6.0 NM to Rwy 04R 2000' (1954')	DA(H) 246' (200')	Apt Elev 48'	TDZE 46'
MISSED APCH: Climb heading 038° to 800', then climbing RIGHT turn heading 057° maintain 5000' and assigned heading for radar vector.					
Alt Set: hPa TDZ Elev: 2 hPa Trans level: FL140 Trans alt: 14000'					
1. Circling not authorized. 2. VGSI and descent angle not coincident (VGSI angle 3.00°/TCH 51').					



Gnd speed-Kts	70	90	100	120	140	160	ALSF-I PAPI PAPI	800' ↑	038° hdg
PAR GS 3.00°	372	478	531	637	743	849			

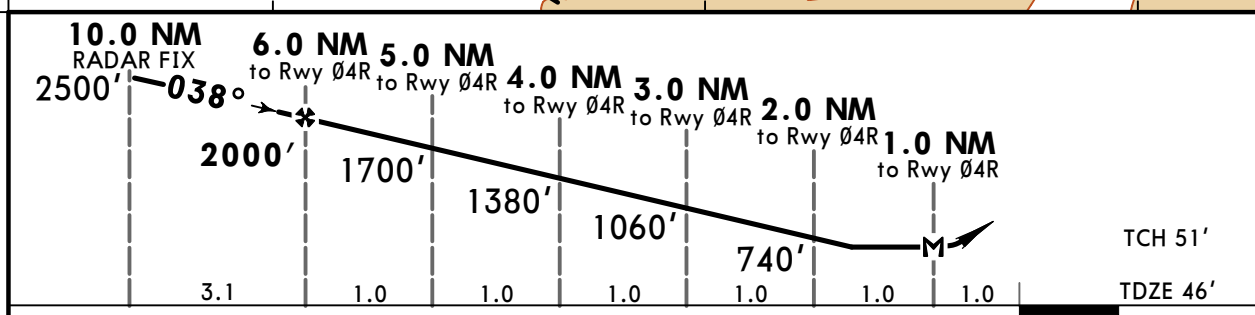
TERPS		STRAIGHT-IN LANDING	
		PAR	
		DA(H) 246' (200')	
		ALS out	
A			
B			
C	200'- R24 or V1/2		200'- R40 or V3/4
D			
E			

RKJJ/KWJ
GWANGJU

JEPPESSEN
22 JUL 22 (18-4)

GWANGJU, KOREA
ASR Rwy 04R

*D-ATIS 128.875		GWANGJU Approach (R) 130.0 120.475		GWANGJU Tower 118.05	Ground 121.8
RADAR	Final Apch Crs 038°	6.0 NM to Rwy 04R 2000' (1954')	MDA(H) 560' (514')	Apt Elev 48'	TDZE 46'
MISSED APCH: Climb heading 038° to 1300', then climbing RIGHT turn heading 057° maintain 5000' and assigned heading for radar vector.					
Alt Set: hPa	TDZ Elev: 2 hPa	Trans level: FL140	Trans alt: 14000'	MSA KWA VOR	



Gnd speed-Kts	70	90	100	120	140	160	ALSIF-I PAPI PAPI	1300'	038° hdg
VDA	2.99°	370	476	529	635	741			
MAP at 1.0 NM to Rwy 04R									

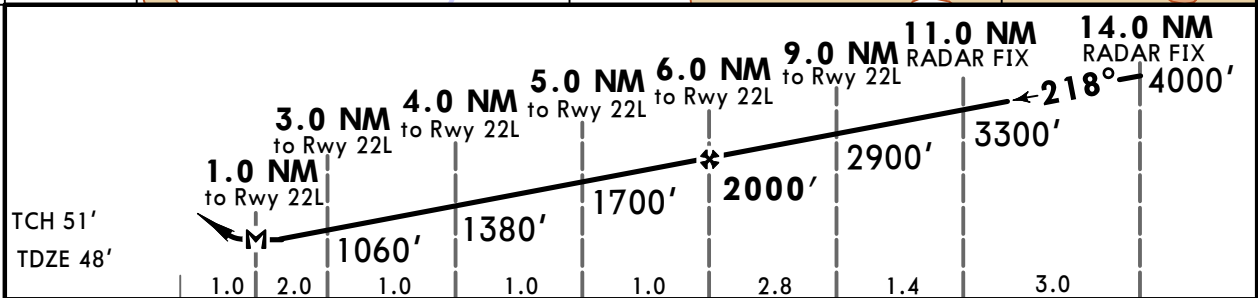
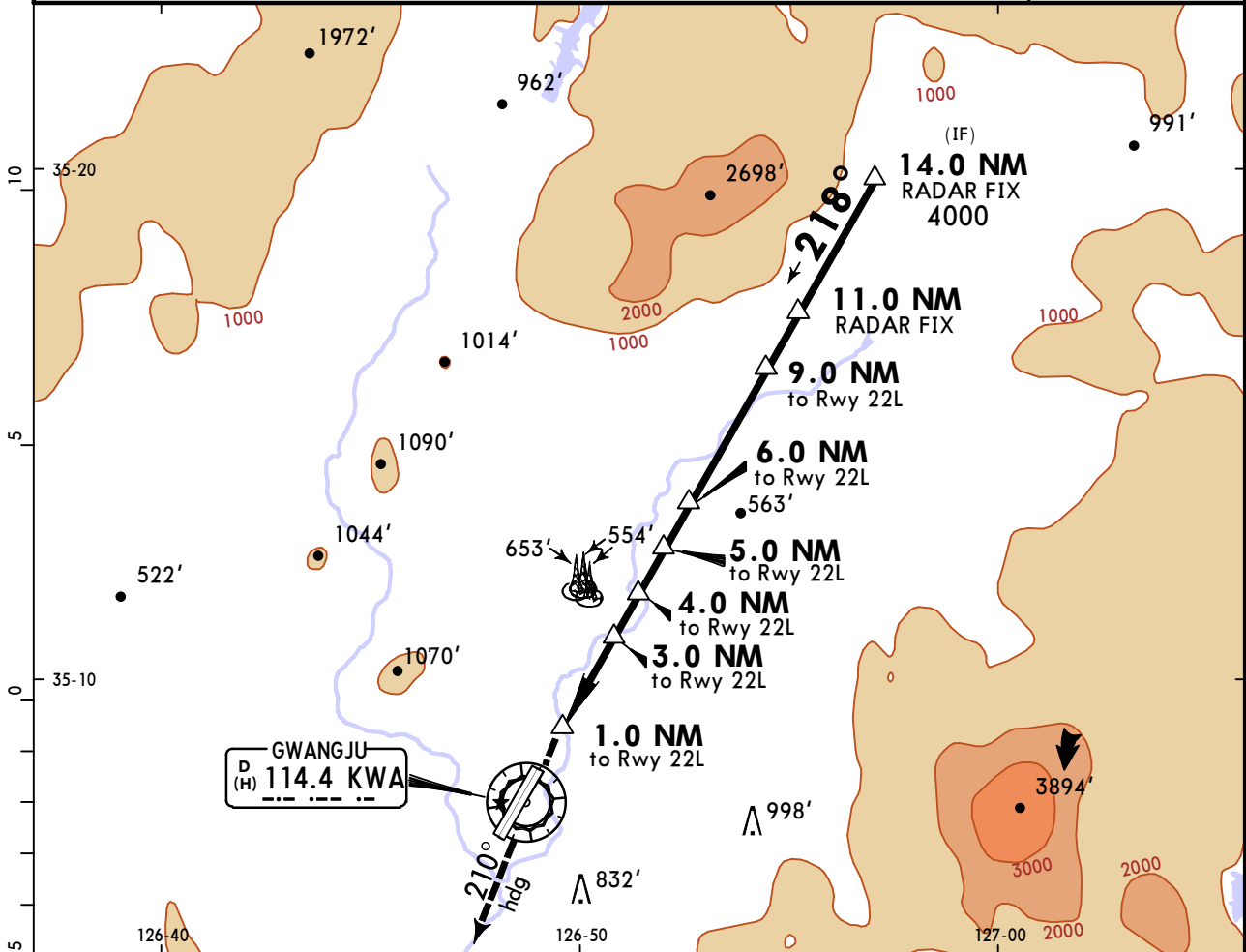
TERPS	STRAIGHT-IN LANDING		CIRCLE-TO-LAND	
	MDA(H) 560' (514')		Circling not authorized for west of Rwy 04/22	
	ALS out		Max Kts	MDA(H)
	A	600'- R40 or V3/4	90	720' (672') 700' -V1 1/4
	B		120	1140' (1092') 1100' -V1 1/2
	C		140	1140' (1092') 1100' -V3
D	600'- R55 or V1		165 1380' (1332') 1400' -V3	
E			E 1460' (1412') 1500' -V3	

RKJJ/KWJ
GWANGJU

JEPPESSEN
15 APR 22 **(18-5)** Eff 20 Apr 1600Z

GWANGJU, KOREA
ASR Rwy 22L

*D-ATIS 128.875		GWANGJU Approach (R) 120.475 130.0		GWANGJU Tower 118.05		Ground 121.8	
RADAR	Final Apch Crs 218°	6.0 NM to Rwy 22L 2000' (1952')	MDA(H) 860' (812')	Apt Elev 48'			
MISSED APCH: Climb heading 210° to 5000', then expect radar vector.							MSA KWA VOR
Alt Set: hPa		TDZ Elev: 2 hPa		Trans level: FL140		Trans alt: 14000'	



Gnd speed-Kts	70	90	100	120	140	160	SSALF PAPI PAPI	5000'	210° hdg
VDA	2.99°	370	476	529	635	846			
MAP at 1.0 NM to Rwy 22L									

TERPS		STRAIGHT-IN LANDING		CIRCLE-TO-LAND	
		MDA(H) 860' (812')		Circling not authorized for west of Rwy 04/22	
		ALS out		Max Kts	MDA(H)
A	900'- R55 or V1	900'- R60 or V1 1/4		90	860' (812') 900' -V1 1/4
B				120	1140' (1092') 1100' -V1 1/2
C				140	1140' (1092') 1100' -V3
D	900'- V2	900'- V2 1/2		165	1380' (1332') 1400' -V3
E				E	1460' (1412') 1500' -V3

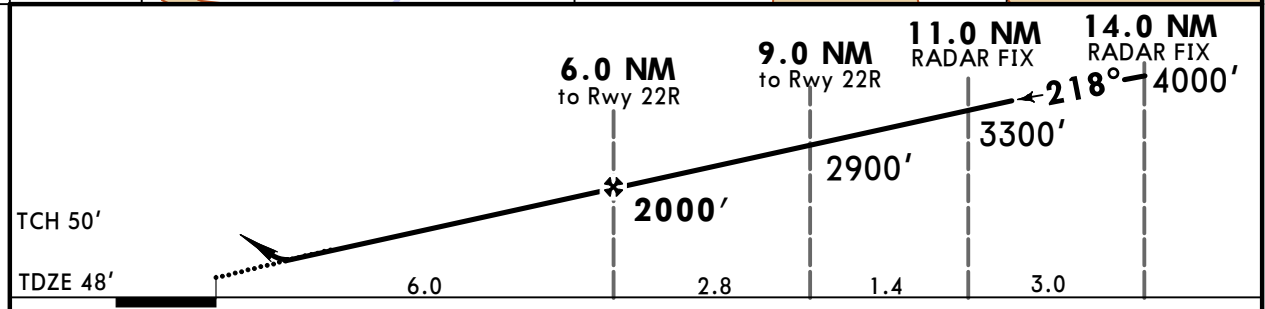
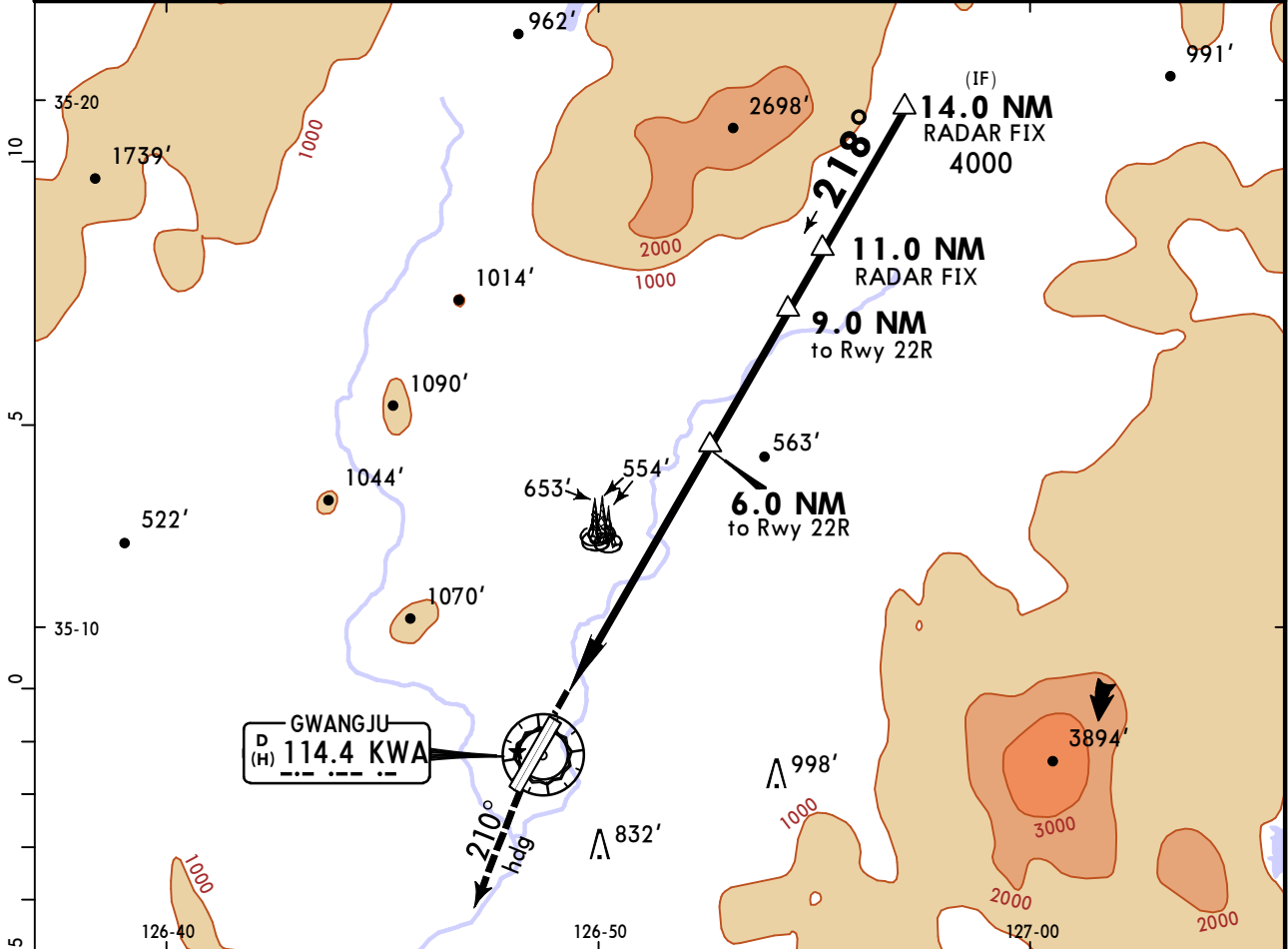
CHANGES: Procedure revised, new AOM concept.

RKJJ/KWJ
GWANGJU

JEPPESEN
22 JUL 22 **(18-6)**

GWANGJU, KOREA
PAR Rwy 22R

*D-ATIS 128.875		GWANGJU Approach (R) 130.0 120.475		GWANGJU Tower 118.05	Ground 121.8
RADAR	Final Apch Crs 218°	6.0 NM to Rwy 22R 2000' (1952')	DA(H) 248' (200')	Apt Elev 48'	TDZE 48'
MISSED APCH: Climb to 5000' on heading 210°, then expect radar vector.					
Alt Set: hPa	TDZ Elev: 2 hPa	Trans level: FL140	Trans alt: 14000'		
1. Circling not authorized. 2. VGSI and descent angle not coincident (VGSI angle 3.00°/TCH 53').					
MSA KWA VOR					



Gnd speed-Kts	70	90	100	120	140	160	SSALF PAPI PAPI	5000' ↑	210° hdg
PAR GS 3.00°	372	478	531	637	743	849			

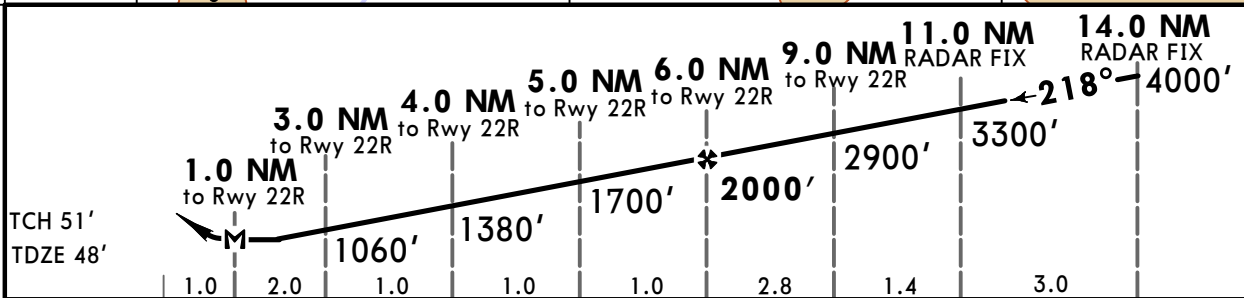
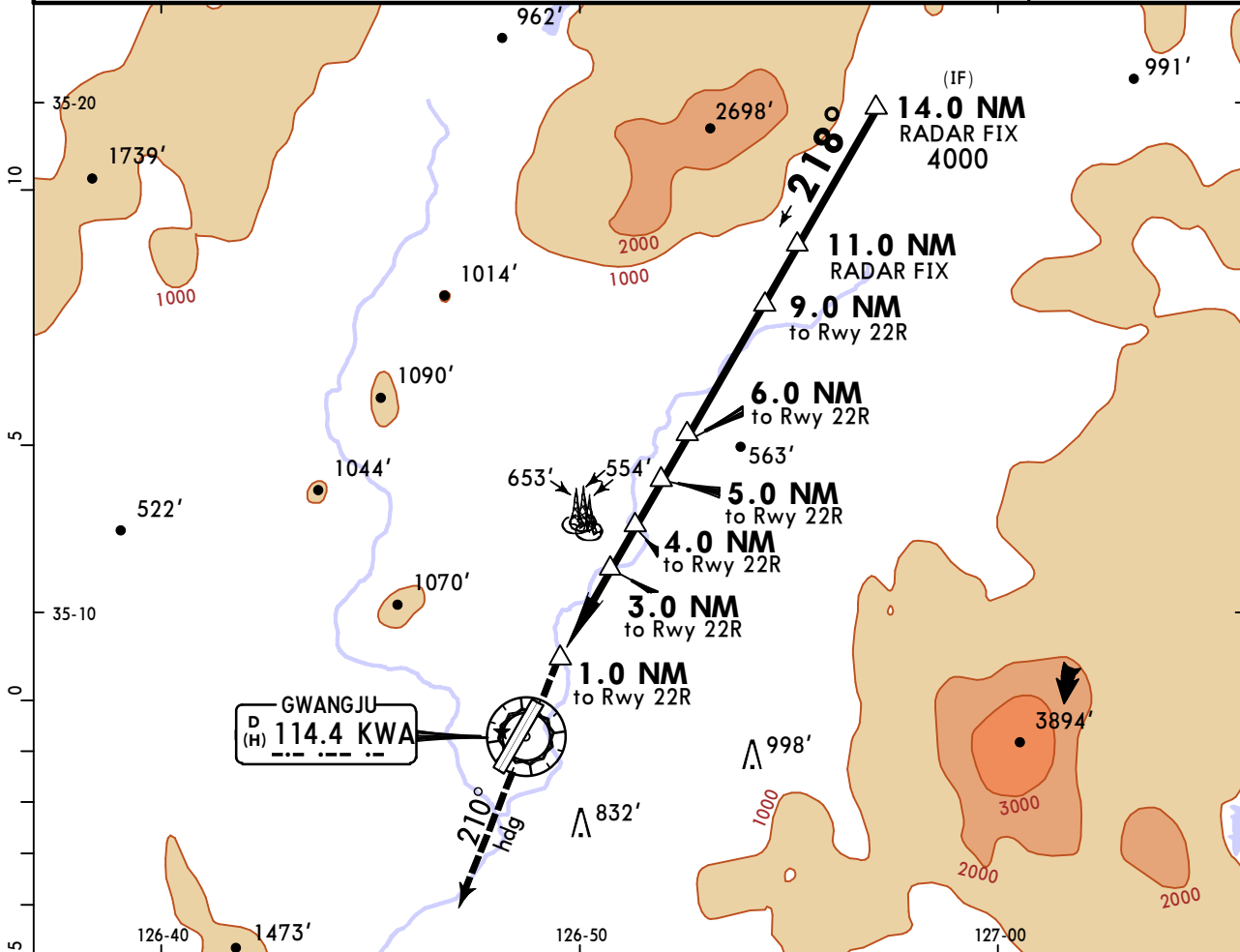
TERPS		STRAIGHT-IN LANDING	
		PAR	
		DA(H) 248' (200')	
		ALS out	
A			
B			
C	200'- R40 or V3/4		200'- R50 or V1
D			
E			

RKJJ/KWJ
GWANGJU

JEPPESSEN
22 JUL 22 (18-7)

GWANGJU, KOREA
ASR Rwy 22R

*D-ATIS 128.875		GWANGJU Approach (R) 130.0 120.475		GWANGJU Tower 118.05	Ground 121.8
RADAR	Final Apch Crs 218°	6.0 NM to Rwy 22R 2000' (1952')	MDA(H) 860' (812')	Apt Elev 48'	TDZE 48'
MISSED APCH: Climb heading 210° to 5000', then expect for radar vector.					
Alt Set: hPa	TDZ Elev: 2 hPa	Trans level: FL140	Trans alt: 14000'	MSA KWA VOR	



Gnd speed-Kts	70	90	100	120	140	160	SSALF PAPI PAPI	5000'	210° hdg
VDA	2.98°	369	474	527	633	738			
MAP at 1.0 NM to Rwy 22R									

TERPS		STRAIGHT-IN LANDING		CIRCLE-TO-LAND	
		MDA(H) 860' (812')		Circling not authorized for west of Rwy 04/22	
		ALS out		Max Kts	MDA(H)
A	900'- R55 or V1	900'- R60 or V1 1/4		90	860' (812') 900'-V1 1/4
B				120	1140' (1092') 1100'-V1 1/2
C				140	1140' (1092') 1100'-V3
D	900'- V2	900'- V2 1/2		165	1380' (1332') 1400'-V3
E				E	1460' (1412') 1500'-V3

CHANGES: None.

Chart changes since cycle 15-2023

ADD = added chart, REV = revised chart, DEL = deleted chart.

ACT	PROCEDURE IDENT	INDEX	REV DATE	EFF DATE
-----	-----------------	-------	----------	----------

GWANGJU, (GWANGJU - RKJJ)

TERMINAL CHART CHANGE NOTICES

No Chart Change Notices for Airport RKJJ